

www.bladeco.com.tr 🔍

 **CUSTOMER CARE**
444 32 99

**PORT
FOLIO
'24**



SINCE
20
08

STRONG
TECHNIC
STAFF
EMPLOYEES

300+

15

REGION

25.000 m²
closed
40.000 m²
factory area

production
lines
in
European
standards

aluminum
stainless
steel
pvc
gloss
stone

world
giant
solution
partners

PER
YEAR

450.000m²
production
capacity



WE

Our References

- MallTurk Alasriya Group AVM / Baghdad / Iraq 2023
- Barbaros 48 / Fuzul Construction / Gayrettepe / Istanbul 2023
- Rams Beyond Hattat Tower Zincirlikuyu / Istanbul 2022-2023
- Başkent University Bodrum Gastronomy School Bodrum / Muğla / Turkey 2022-23 (Project phase)
- Bodrum Painting and Sculpture Museum Bodrum / Muğla / Turkey 2021-2023 (Project phase)
- 1915 Çanakkale Bridge Security facade consultancy / Çanakkale / Turkey (Project phase)
- Almaata Art Museum / Almaata / Kazakhstan 2022-23 - RAMS Almaata Sales office building / Kazakhstan 2022-23
- CUBES / Vakıf GYO / Mustafa Ekşi / Ankara 2021-2022
- FANUC / JLL / Robot Factory / KG Architecture / Sancaktepe / Istanbul 2021-2023
- Bomonti Tower / Gürel Fındık GYO / Istanbul 2021-2022
- 1915 Çanakkale Bridge Facade security systems project Lapseki / Çanakkale 2022-23
- Akzirve Topkapı Sales Office 2020-2021 - DGYO-SEBA Construction Tarabya Residences 2019-2020
- KDM Construction Ahmet Atilla Business Center Mahmutbey / ISTANBUL 2020
- Beylikdüzü Municipality Public Market / Istanbul 2019-2020
- Nivo Istanbul Residence / Workplace / Office Residence / CATHAY Construction / Güneşli / Istanbul 2019
- Bezm-i Alem University Hospital Istanbul / 2018
- Demir Construction Demir Country Residence + Workplace + Shopping Mall Beylikduzu / Istanbul 2018
- Aquapark + Theme park + Hotel + Shopping Mall Complex Namangan / Uzbekistan 2017-18
- Hoca Ahmet Yesevi Museum / Turkistan / Kazakhstan 2017-2018
- Namangan Mosque Namangan / Uzbekistan 2017
- Manisa Municipality Hotel and Office Blocks Project Manisa / 2017-18
- Aden Metal, Expo 2017 Küre Kazakhstan pavilion (Facade Application Consultancy) Astana / Kazakhstan / 2015-2017
- Aden Metal, Expo Congress Center (Facade Application Consultancy) Astana / Kazakhstan / 2015-2017
- Aden Metal, Astana Vagzal Train Station (Facade Application Consultancy) Astana / Kazakhstan 2015-2017
- AZIZ Yapı, Ataköy Towers (Facade Consultancy) Yeşilköy / Istanbul 2015 - 2017
- Has Yapı, Newista Residence (Facade Consultancy) Beylikdüzü / Istanbul 2012 - 2014



FACTORY AND TECHNOLOGY CENTER

Bladeco strengthens its position in the industry with its modern factory and technology center located in the Gonen district of Isparta. At this facility, photovoltaic solar panels and electric vehicle charging stations are produced, leading the way in innovative technologies. Bladeco's investments in eco-friendly energy solutions and smart infrastructure systems contribute not only to regional development but also take significant steps toward a sustainable future. This facility in Gönen serves as a central hub that reinforces Bladeco's leadership in the sector through its technological and production capabilities.

PROJECT PLANNING

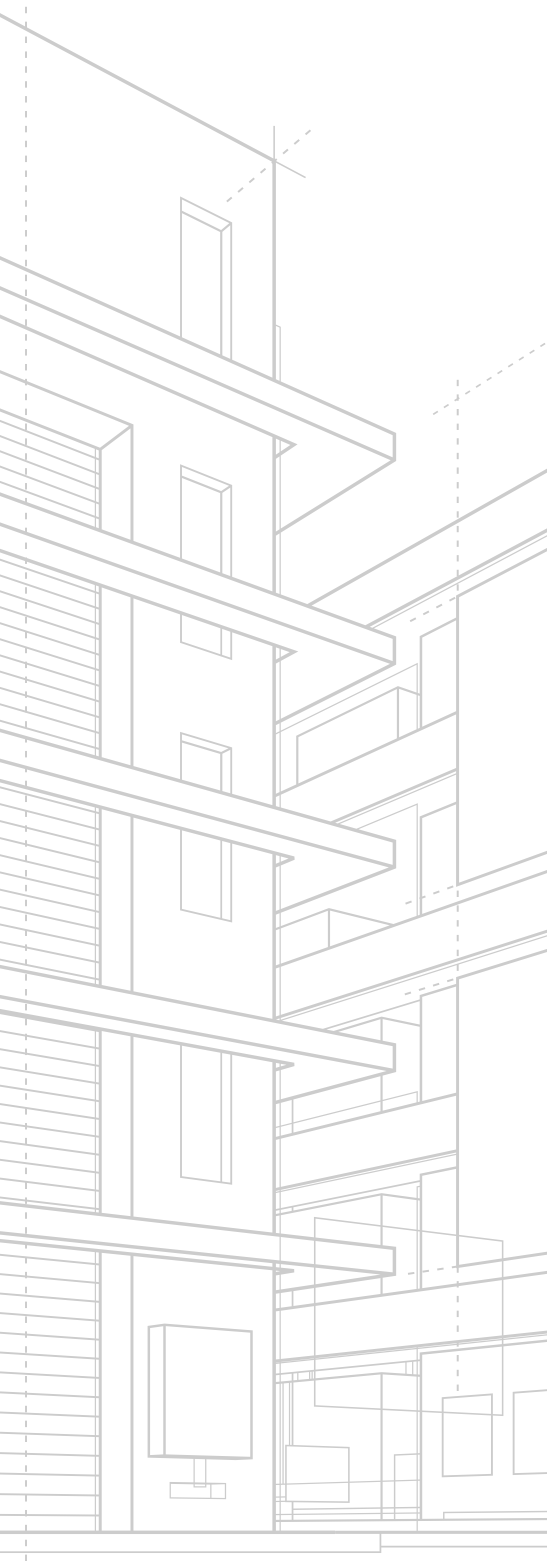
Making the facade of a building requires much more than just manufacturing facades and joinery, considering the developing technologies and self-amortizing building solutions. As Bladeco Facade, we meticulously carry out project design works according to the requirements of a building with our Design Center, which has a strong technical staff, and we leave permanent signatures on hundreds of projects we have carried out both domestically and abroad with the systems of world giant companies, of which we are solution partners.



We see each building for which we design a facade as a legacy we leave to the future, and we attach importance to the engineering aspect of our work.

MANUFACTURING

With our manufacturing quality in European standards and the certificates we have, we are one of the leading companies in the sector in many innovations. We work with the awareness that a quality service cannot be measured only by product quality, and we support our product quality with our manufacturing and service quality. As a group that has turned all the experience and gains we have gained over the years into investment, our investments have not been limited to expanding our factory area and increasing the machinery equipment, Bladeco Facade has developed and grown together with our employees, whom we see as our most important gain.



In all our projects, each of which is special, we shape quality materials with quality manufacturing.

QUALITY-CONTROL AND LOGISTICS

We export both our own R&D systems and the systems of the companies we are solution partners with to different parts of the world. We care not only about product quality but also about total service quality, and with the documents we have, we manufacture in accordance with the standard expectations of each country and ship them in international standards.



We trust in our quality and proudly send Bladecco signed products to all over the world.



ASSEMBLY

We also provide services in different geographies in the assembly service, which is the last step that gives life to buildings. We offer our product quality together with our assembly service quality with our experienced project and assembly teams.



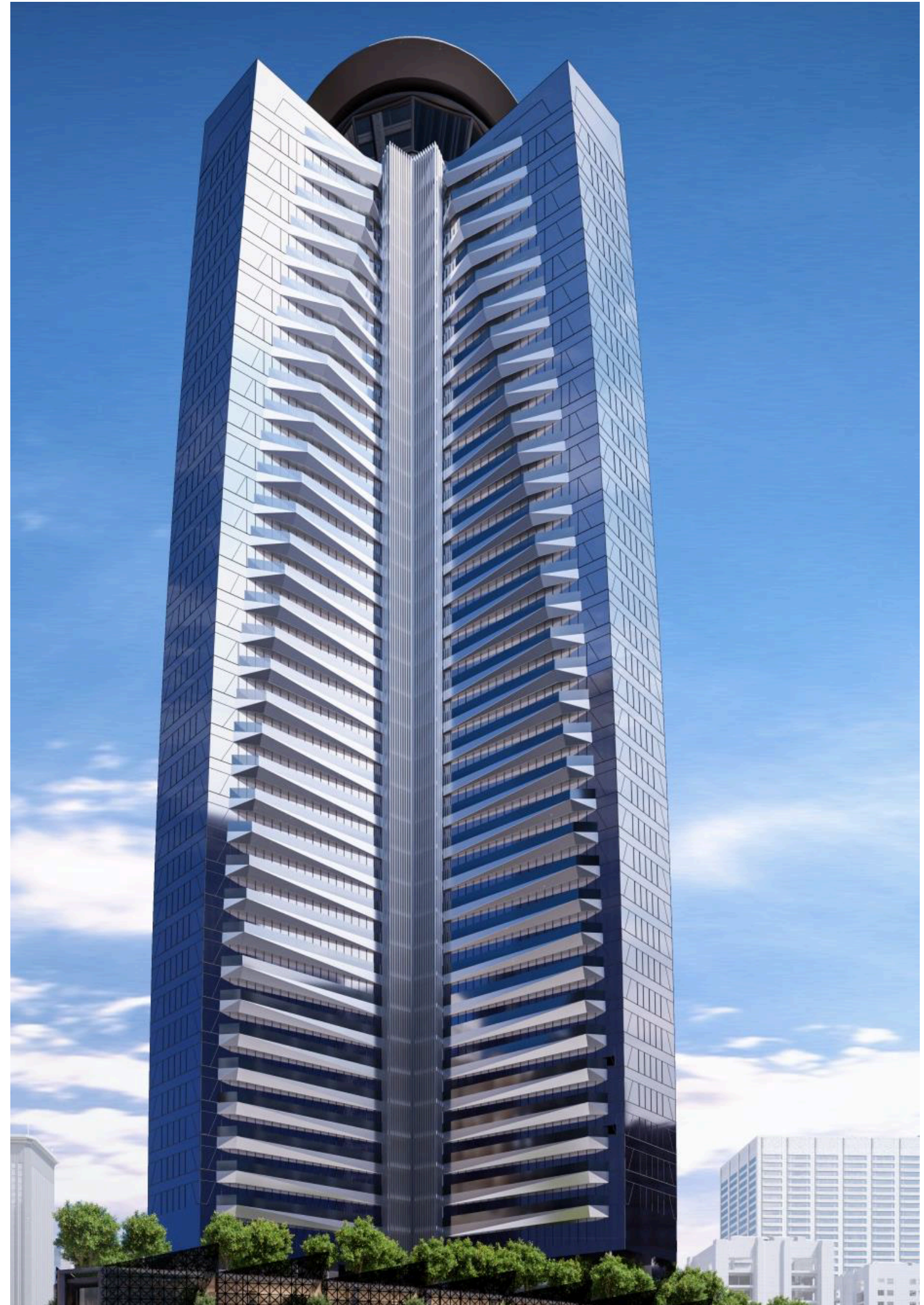
Yolumuzu tecrübelerimizle aydınlatıyor, daima en iyisi olmak için çalışıyoruz.

IN EVERY AREA OF LIFE.

Facade R&D Energy Invest Charge Technology Solar

Rams Beyond Istanbul

Facade Structures Engineering and Consultancy
Bladeco Facade



Theme Park Tashkent Uzbekistan

Facade Structures Engineering and Consultancy
Bladeco Facade



Namangan Mosque Uzbekistan

Facade Structures Engineering and Consultancy
Bladeco Facade

Facade System
Parametric

Facade Area
4200m²



Atakoy Towers İstanbul

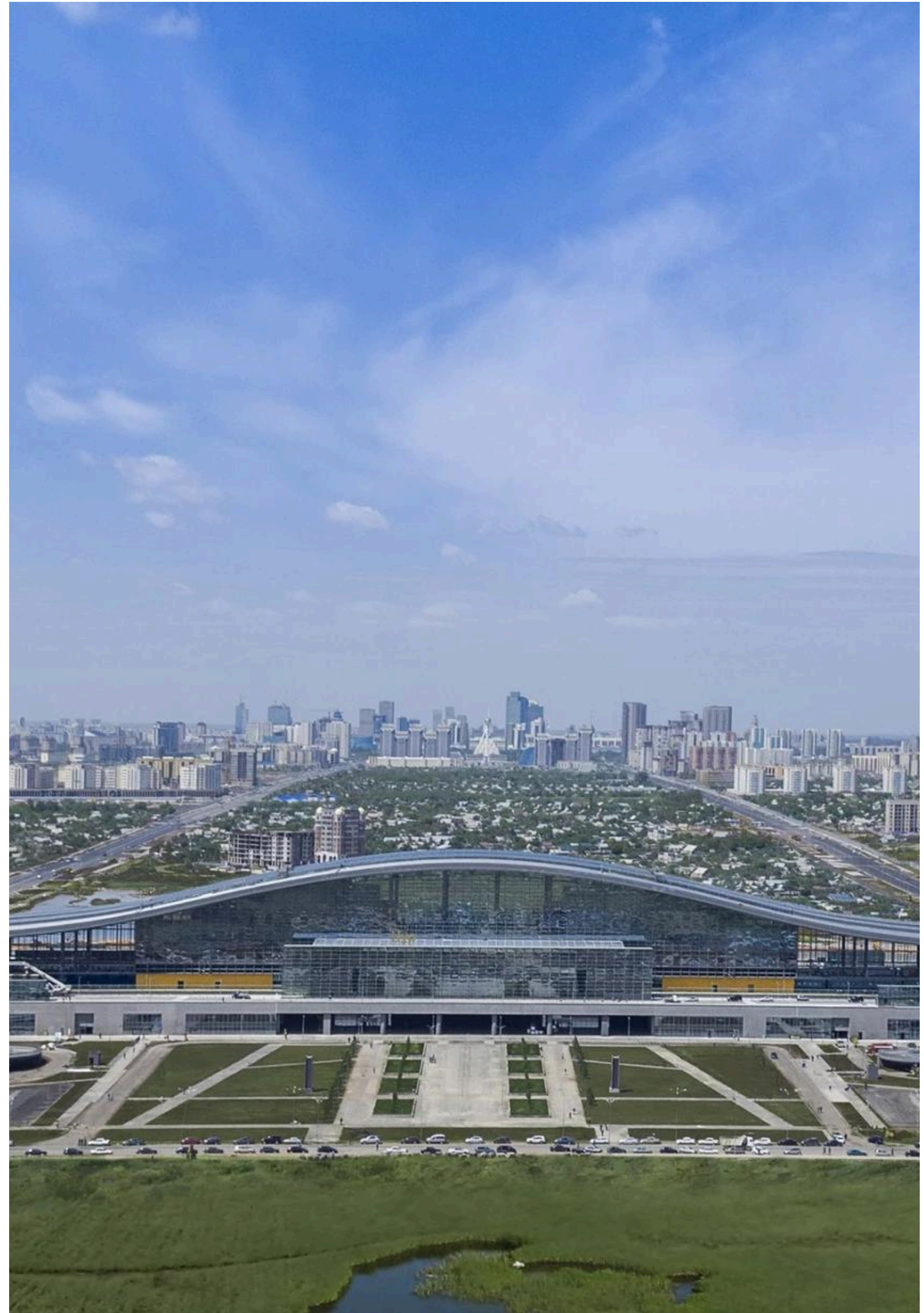
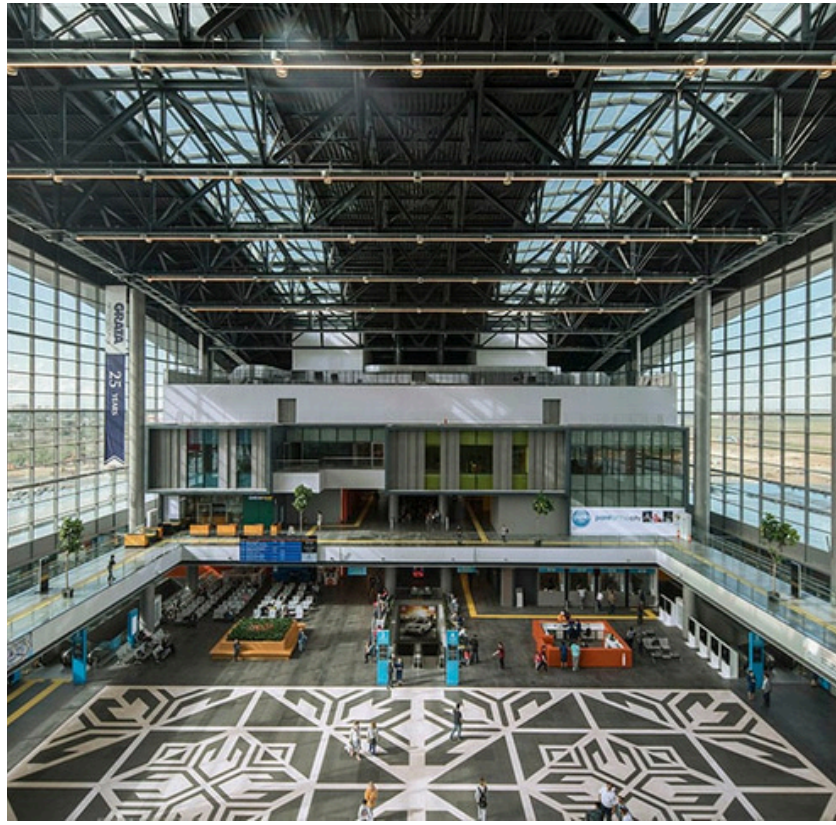
Facade Structures Engineering and Consultancy
Bladeco Facade

Facade Area
4800m²



Astana Train Station Kazakhstan

Facade Production and Application
BladeCo Facade



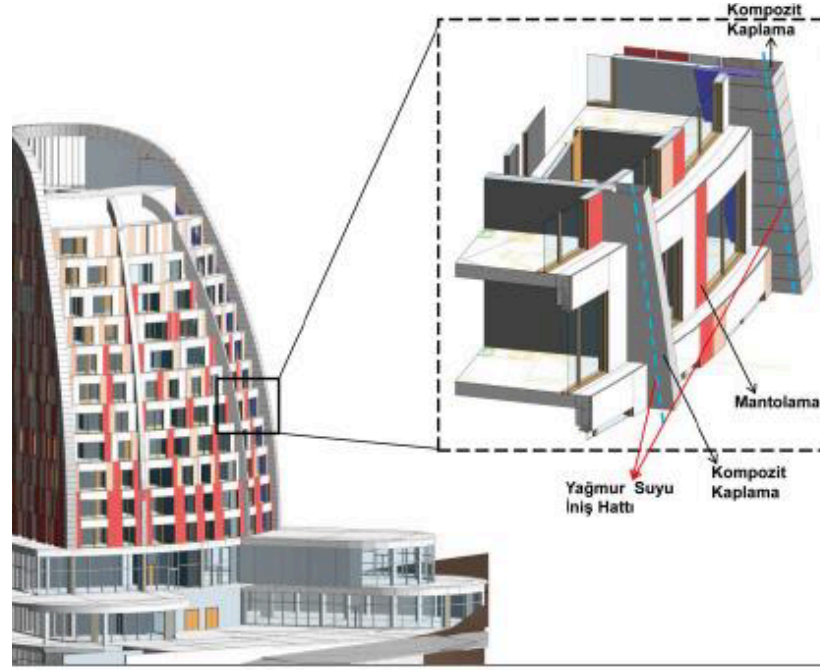
MRO Technic Plane Hangars Sabiha Gökçen Airport

Facade Structures Engineering and Consultancy
Bladeco Facade



Cathay Atrerium Residences Istanbul

Production and Application
Bladeco Facade



Barbaros 48 Istanbul

Facade Production and Application
Bladeco Facade



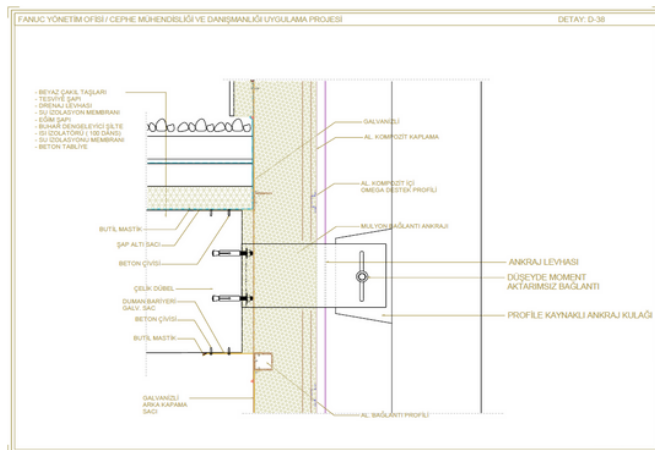
Bomonti Tower Istanbul

Facade Production and Application
Bladeco Facade

Facade Area
15000m²

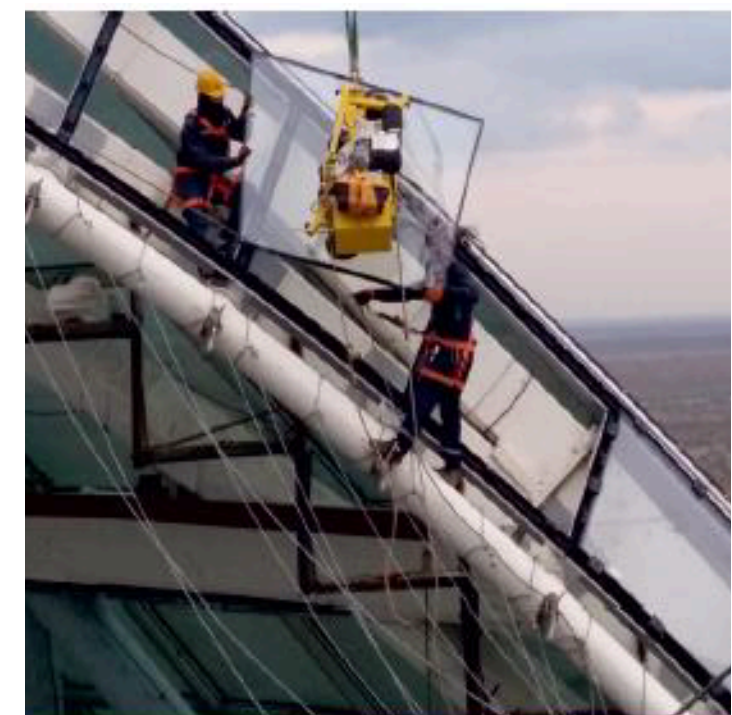
Facade System
Panel System





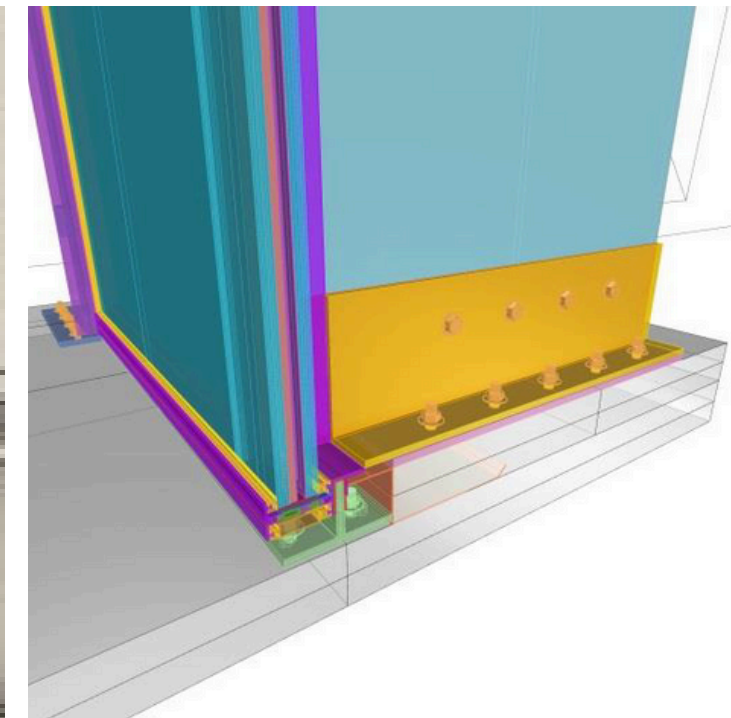
Expo 2017 Congresium Astana

Facade Production and Application
Bladeco Facade



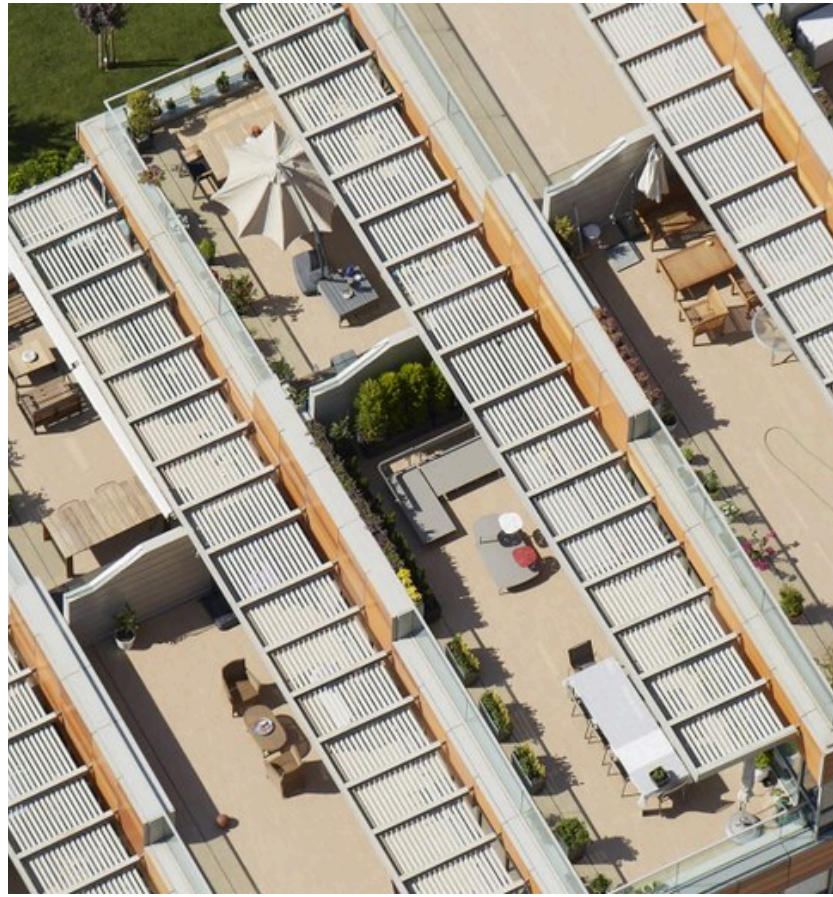
Expo 2017 Congresium Astana

Facade Production and Application
Bladeco Facade



Meridian Istanbul

Facade Production and Application
Bladeco Facade

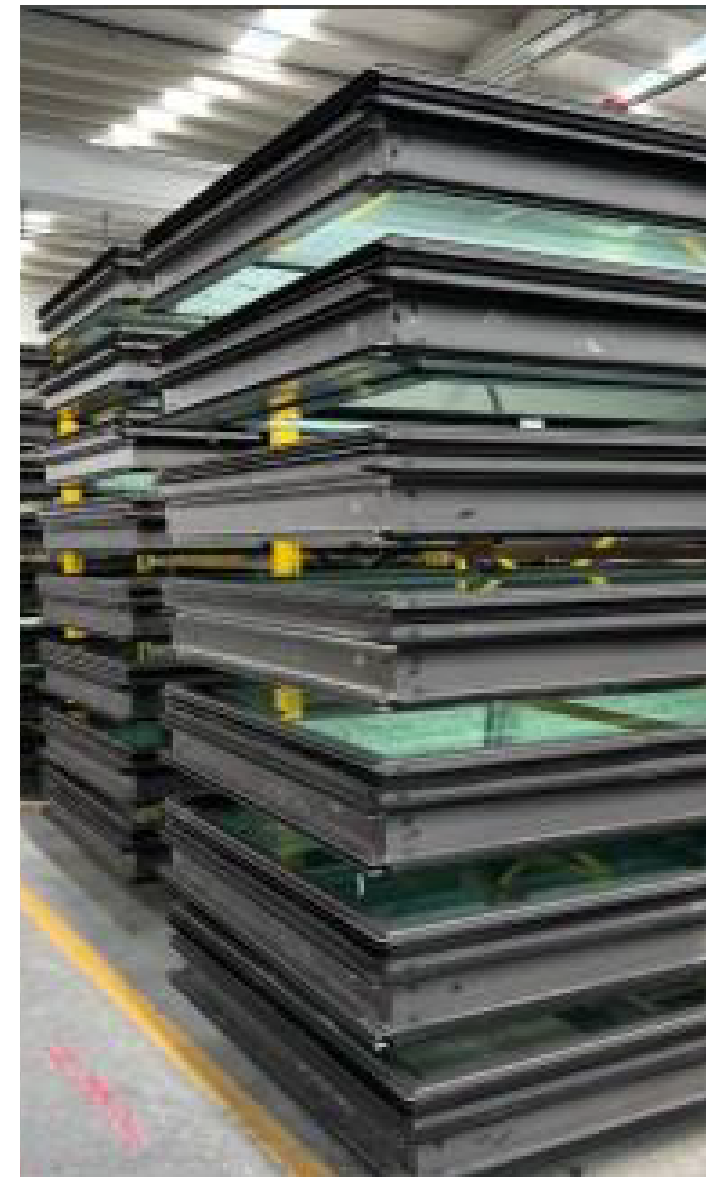


Cubes Ankara

Production and Application
Bladeco Facade

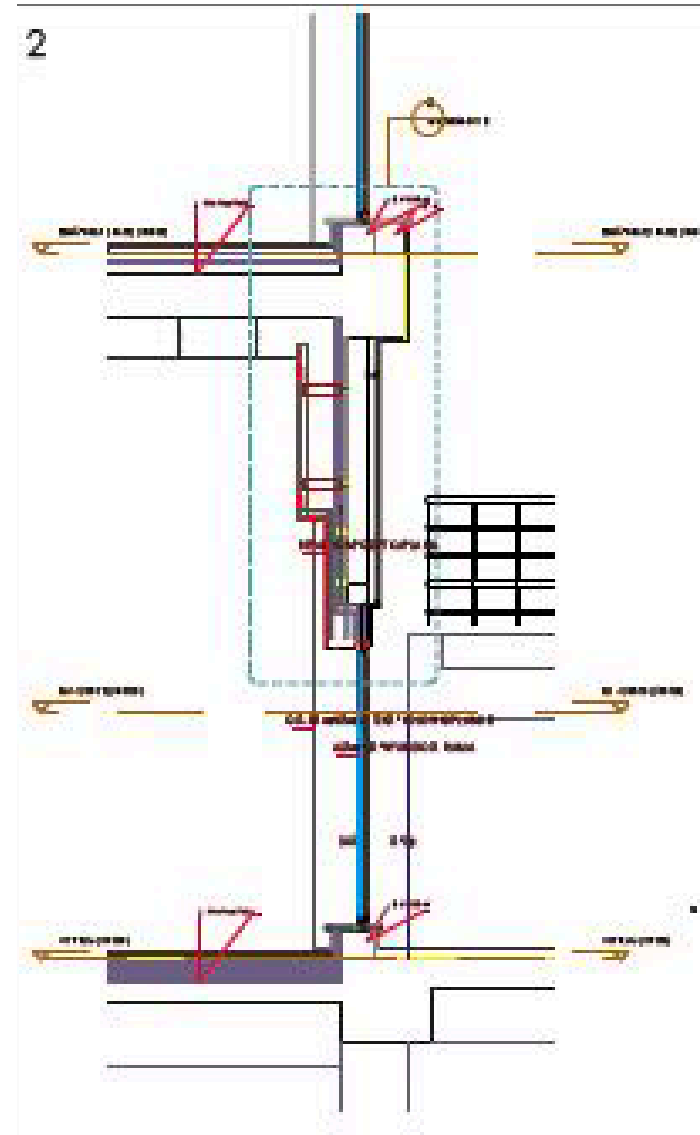
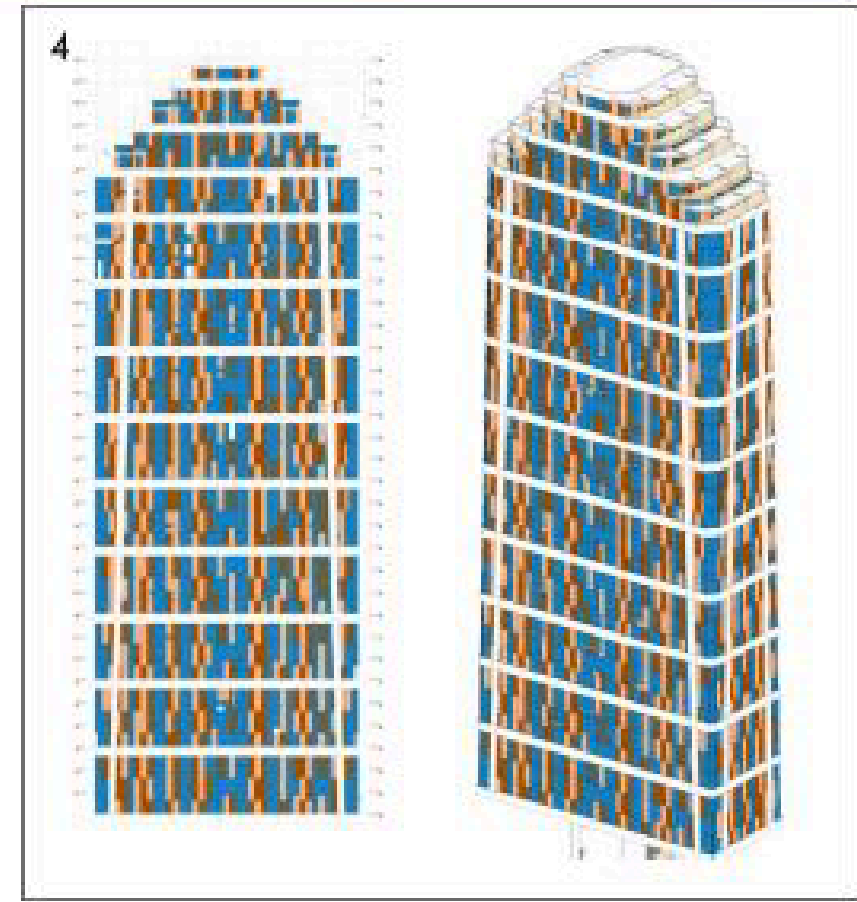
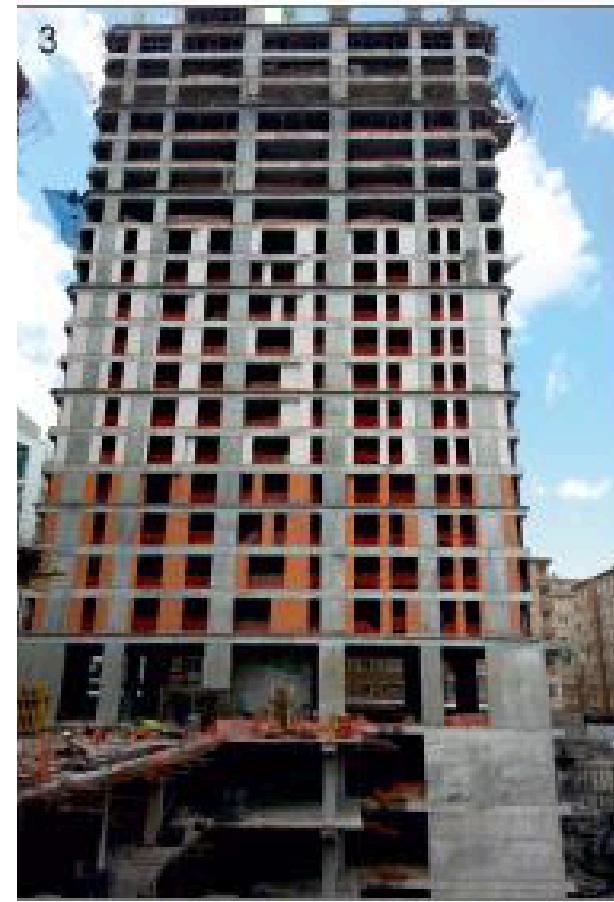
Architectural Project
Lejyant

Facade System
Panel System + Stick System



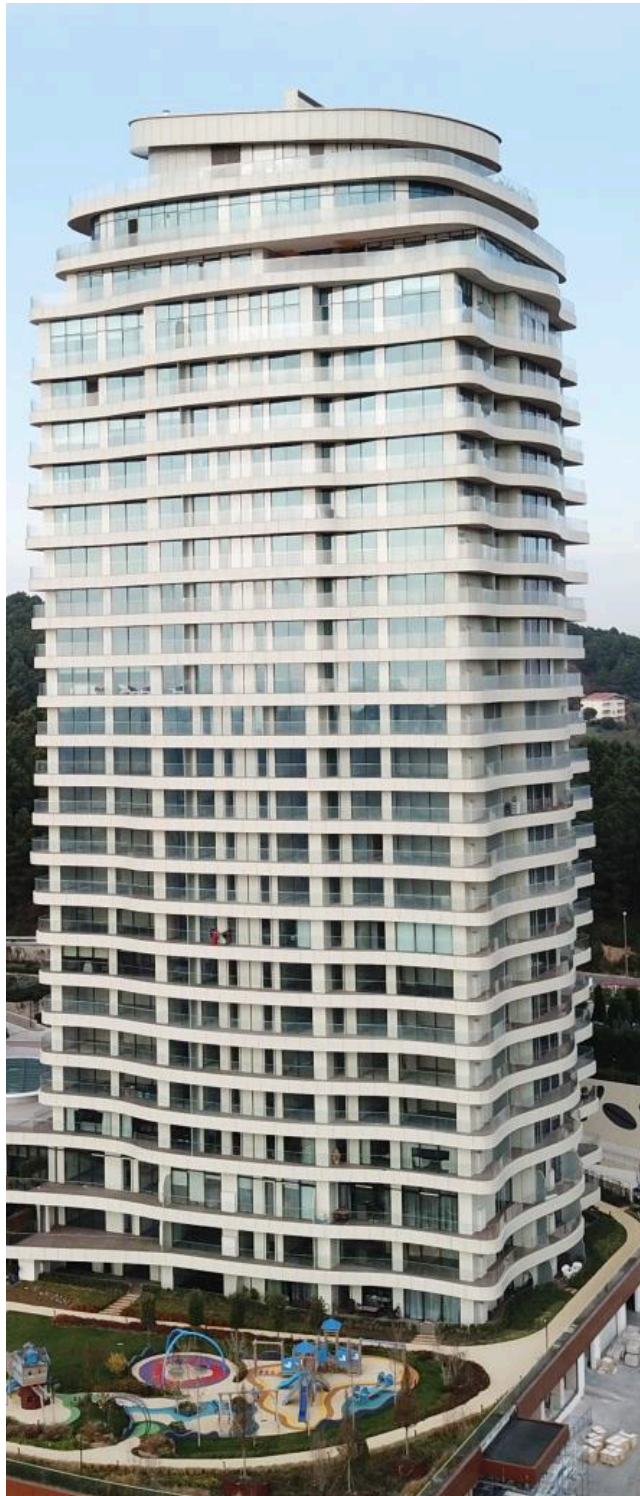
Cathay Newista Residance Istanbul

Production and Application
Bladeco Facade



AcarBlu Istanbul

Facade Production and Application
Bladeco Facade



Metropol Istanbul

Facade Structures Engineering and Consultancy
Architectural Project
Bladeco Facade



Topkapi Istanbul

Facade Production and Application
Bladeco Facade



Manzara Adalar Istanbul

Facade Production and Application
Bladeco Facade



Rotaj Royal Hotel Istanbul

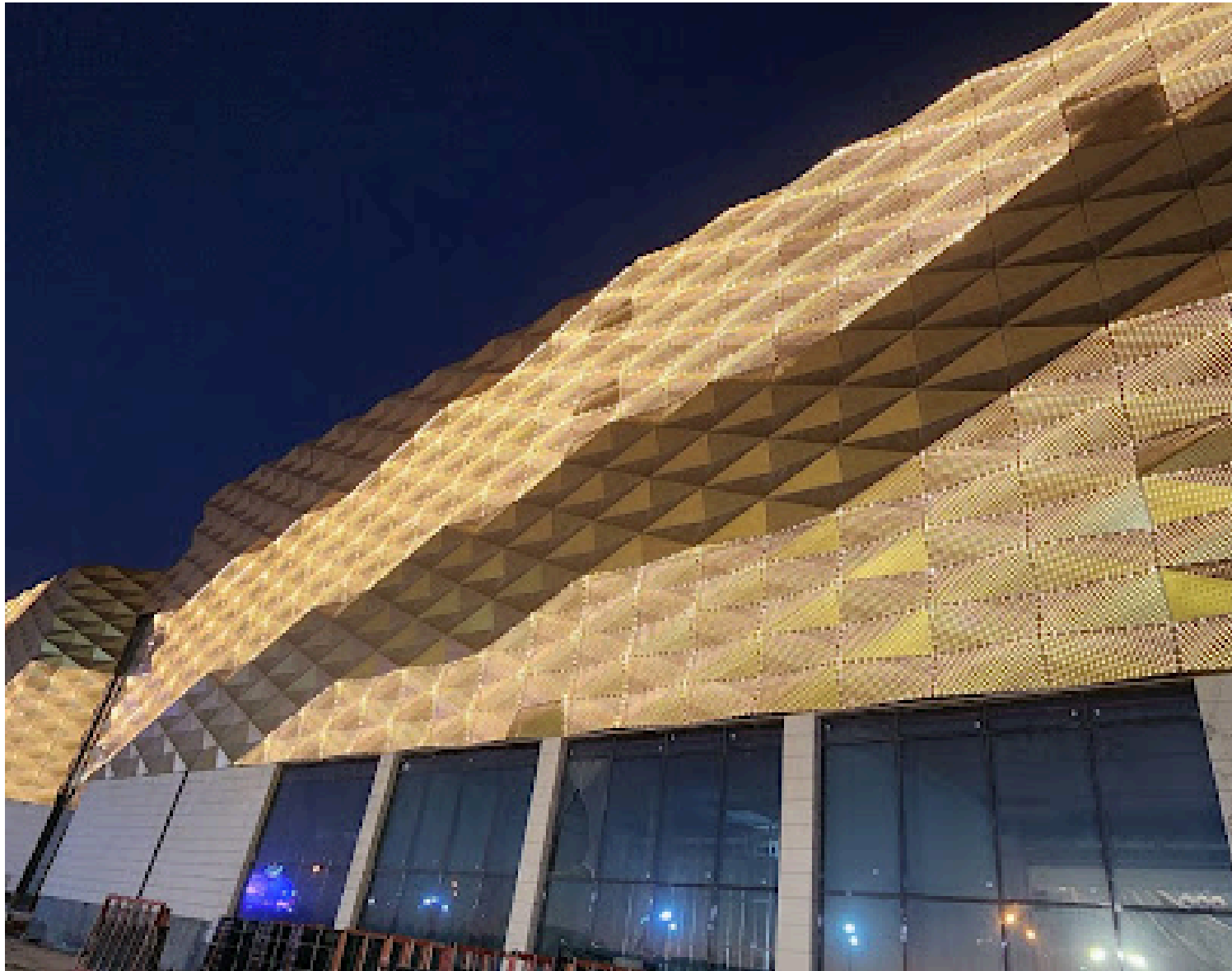
Facade Production and Application
Bladeco Facade



Iraq Mall Baghdad

Facade Production and Application
Bladeco Facade

Facade Structures Engineering and Consultancy
Architectural Project
Bladeco Facade



Bladeco Energy PV Panel Factory Isparta

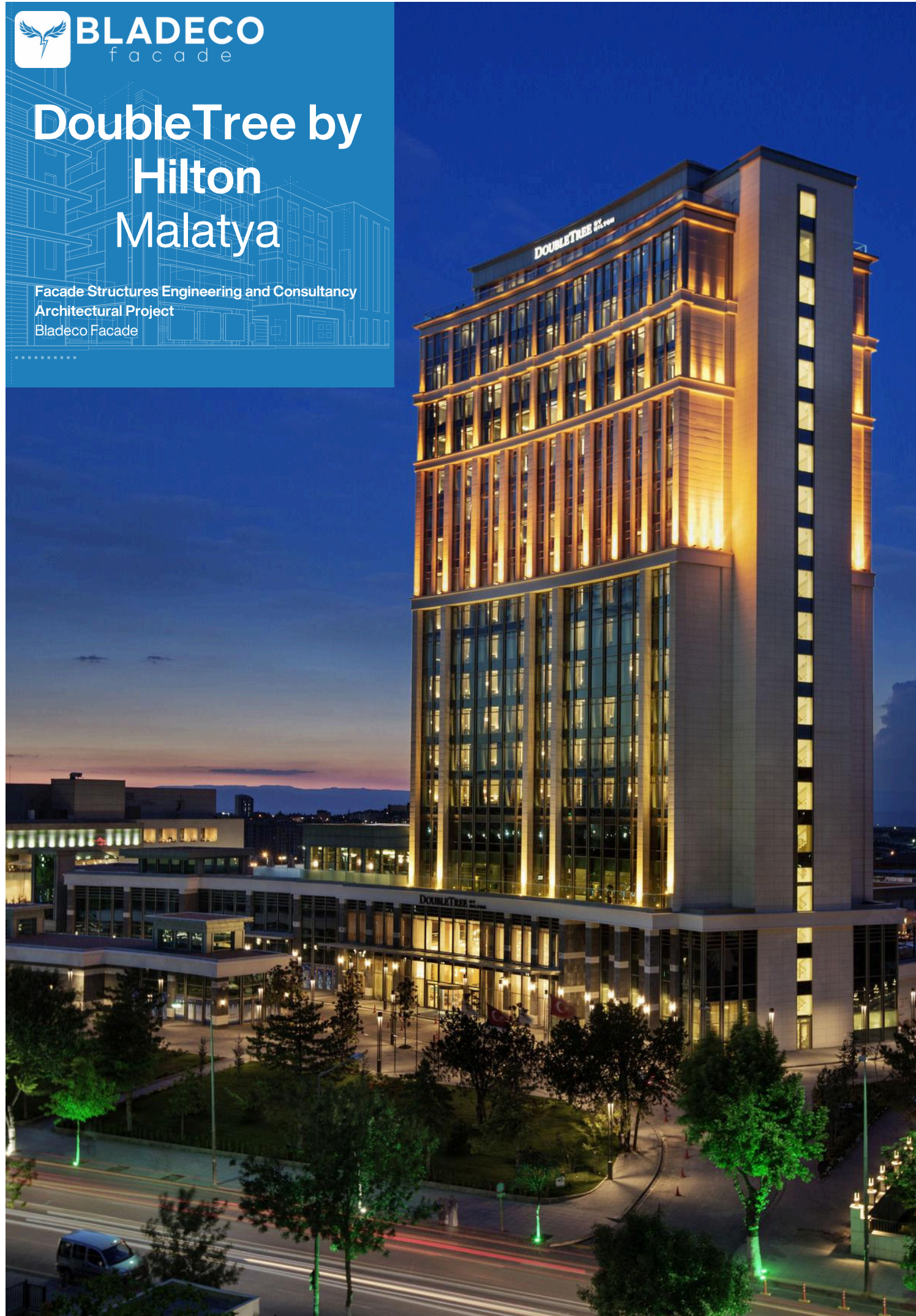
Facade Production and Application
Bladeco Facade

Facade Structures Engineering and Consultancy
Architectural Project
Bladeco Facade



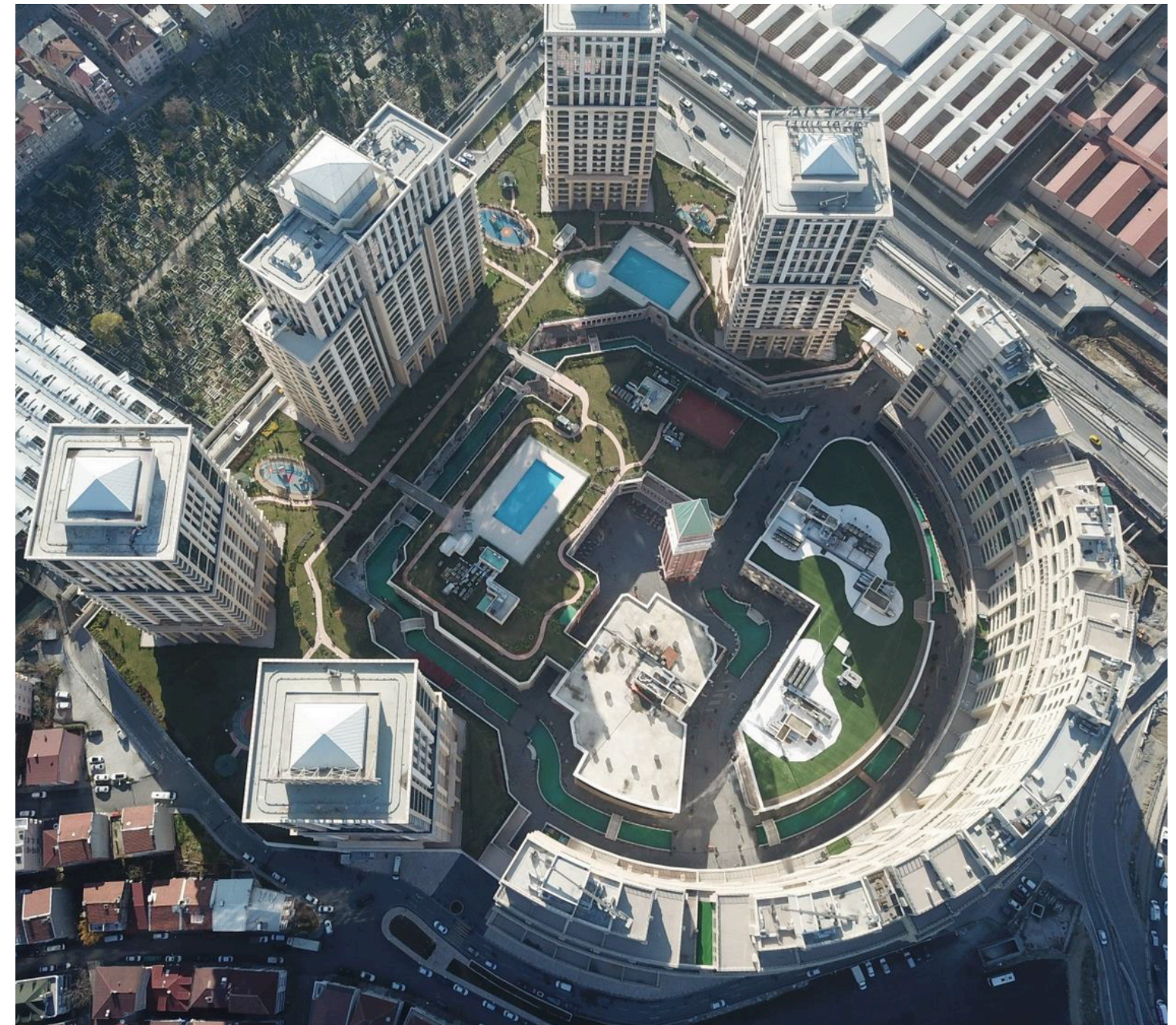
DoubleTree by Hilton Malatya

Facade Structures Engineering and Consultancy
Architectural Project
Bladeco Facade



Venezia Istanbul

Facade Structures Engineering and Consultancy
Architectural Project
Bladeco Facade



Vialand Istanbul

Facade Structures Engineering and Consultancy
Architectural Project
Bladeco Facade

