



# EV

## CHARGE SOLUTIONS CATALOG





# The Future of Green Energy.

At Bladeco, we are committed to leading the future of green energy through our innovative solutions. Our range of renewable energy technologies is designed to foster a sustainable and eco-friendly future. Among these solutions, our electric vehicle charging systems stand out as key contributors to a greener transportation ecosystem.

Our cutting-edge charging stations are engineered to support the transition to clean energy by providing efficient and reliable charging solutions. Whether for residential or commercial use, Bladeco's EV charging solutions are optimized for performance and sustainability. By choosing Bladeco, you are not only embracing advanced technology but also playing a crucial role in reducing carbon emissions and promoting sustainable mobility. Join us in shaping the future with our state-of-the-art energy solutions and electric vehicle charging systems, and be a part of the green energy revolution.



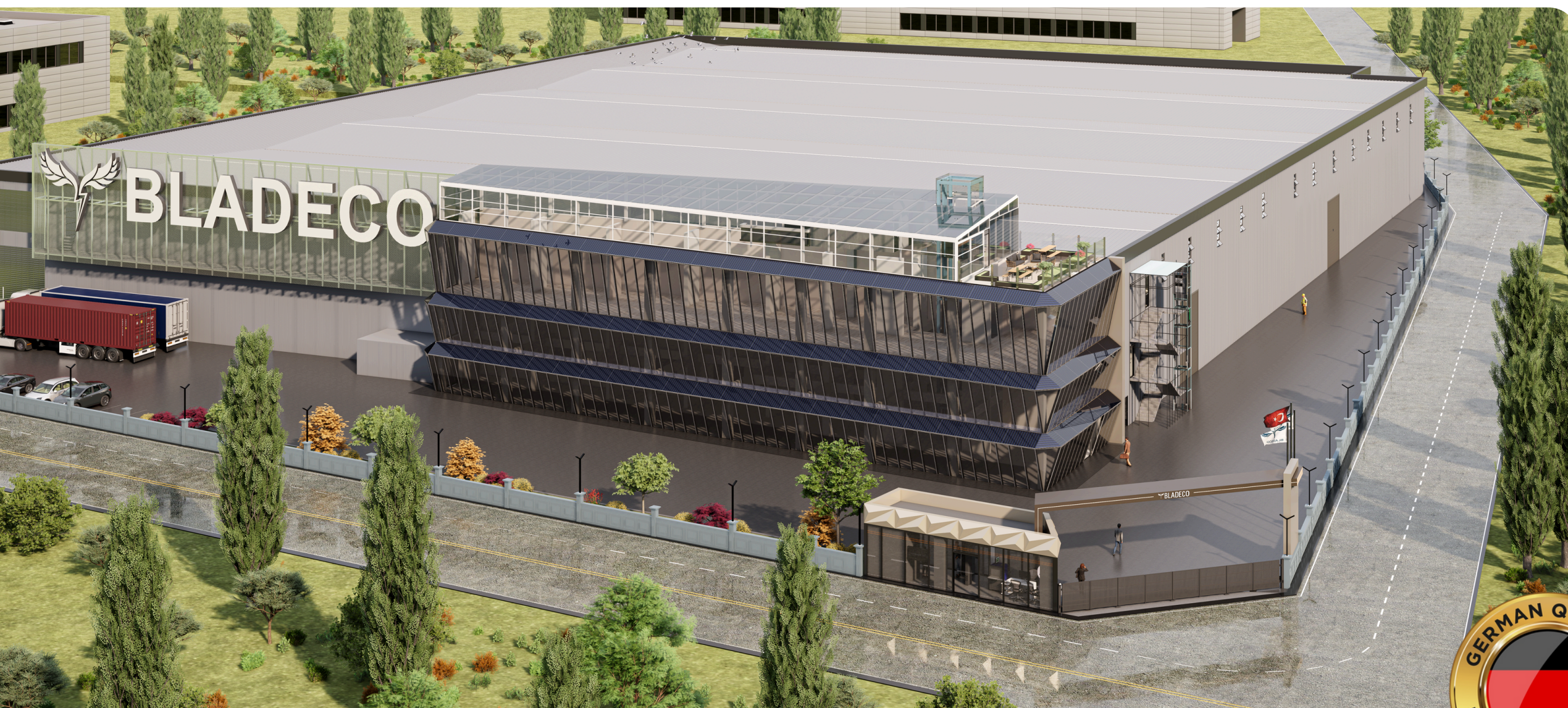




## FACTORY AND TECHNOLOGY CENTER

Bladeco strengthens its position in the industry with its modern factory and technology center located in the Gonen district of Isparta. At this facility, photovoltaic solar panels and electric vehicle charging stations are produced, leading the way in innovative technologies. Bladeco's investments in eco-friendly energy solutions and smart infrastructure systems contribute not only to regional development but also take significant steps toward a sustainable future. This facility in Gönen serves as a central hub that reinforces Bladeco's leadership in the sector through its technological and production capabilities.





Expert  
Staff



Research  
Center



Advanced  
Certification



Global  
Production

# Bladeco Gönen Plant

The Bladeco Gönen Plant is a state-of-the-art facility dedicated to the production of advanced energy solutions. Located in the heart of Isparta's Gönen district, this cutting-edge plant serves as a hub for innovation and sustainability in the energy sector.

At the Gönen Plant, we specialize in the manufacturing of photovoltaic solar panels and electric vehicle charging stations. Equipped with the latest technology and operated by a team of skilled professionals, the facility is designed to meet the highest standards of quality and efficiency.

Our commitment to excellence is reflected in every product that comes off the production line at the Gönen Plant. By combining innovative design with rigorous testing and quality control, we ensure that our products are not only reliable but also contribute to a greener, more sustainable future. The Gönen Plant is more than just a manufacturing site; it's a testament to Bladeco's vision of leading the charge in renewable energy. Here, we are shaping the future of energy, one product at a time.





# BLADECO

20  
08 SINCE

world  
giant solution  
partners

15  
REGION

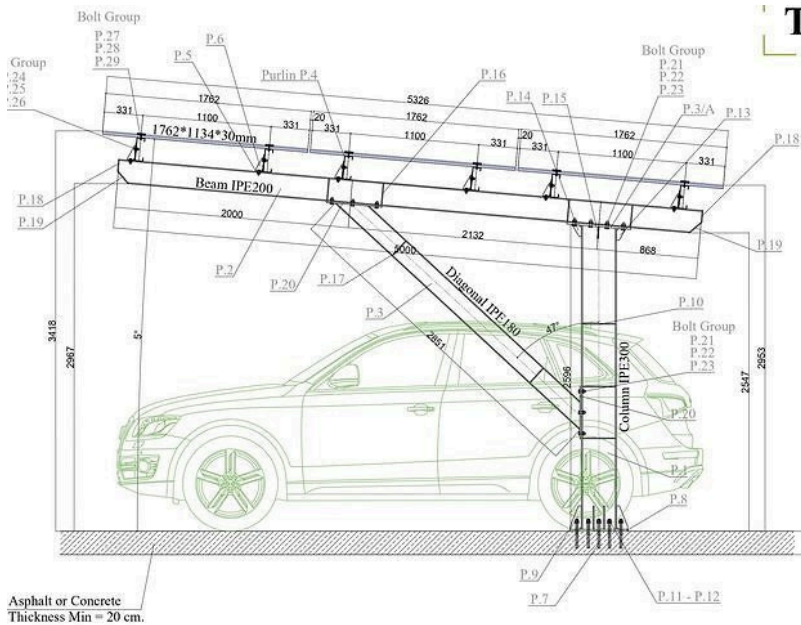
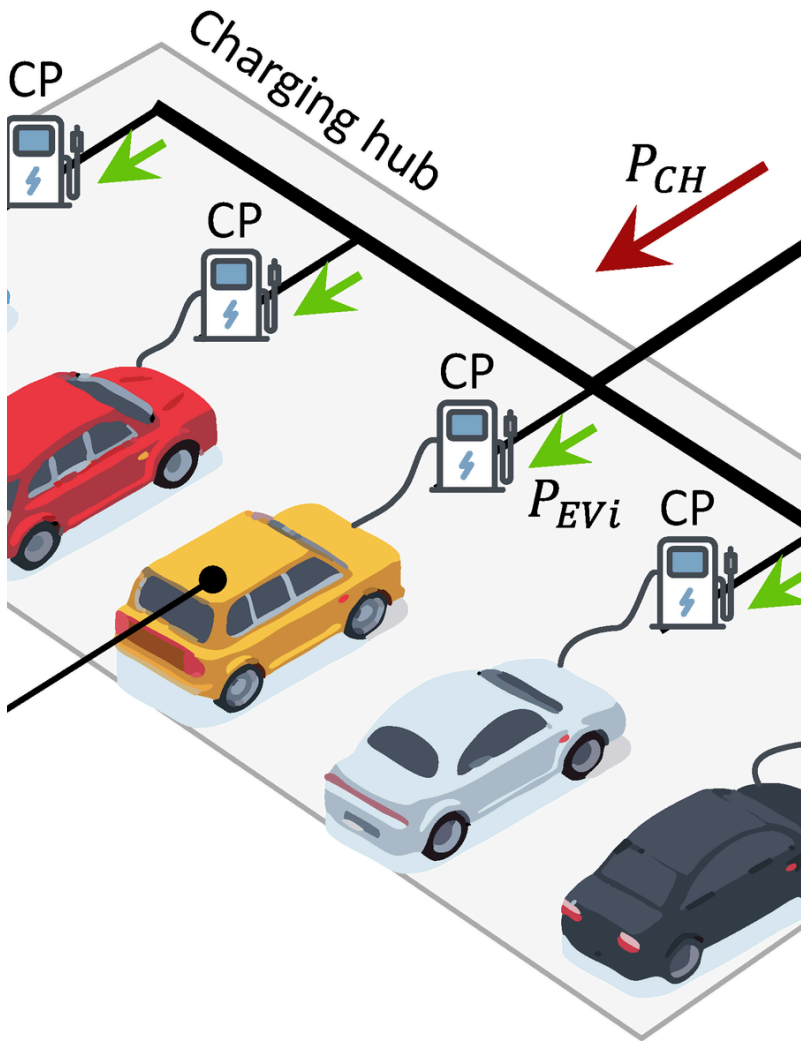
EMPLOYEES  
300+

production  
lines in  
European  
standards



PROJECT PLANNING

When planning a solar carport project with Bladeco, we focus on integrating renewable energy solutions with functional and aesthetic design. Each carport is tailored to meet the specific needs of our clients, ensuring optimal solar panel placement for maximum energy generation. Our project planning process involves detailed site assessments, customized design solutions, and comprehensive timelines that align with your project goals. Bladeco's expertise in solar panel installation and construction ensures that your carport will not only enhance the sustainability of your property but also provide a seamless and efficient parking solution.

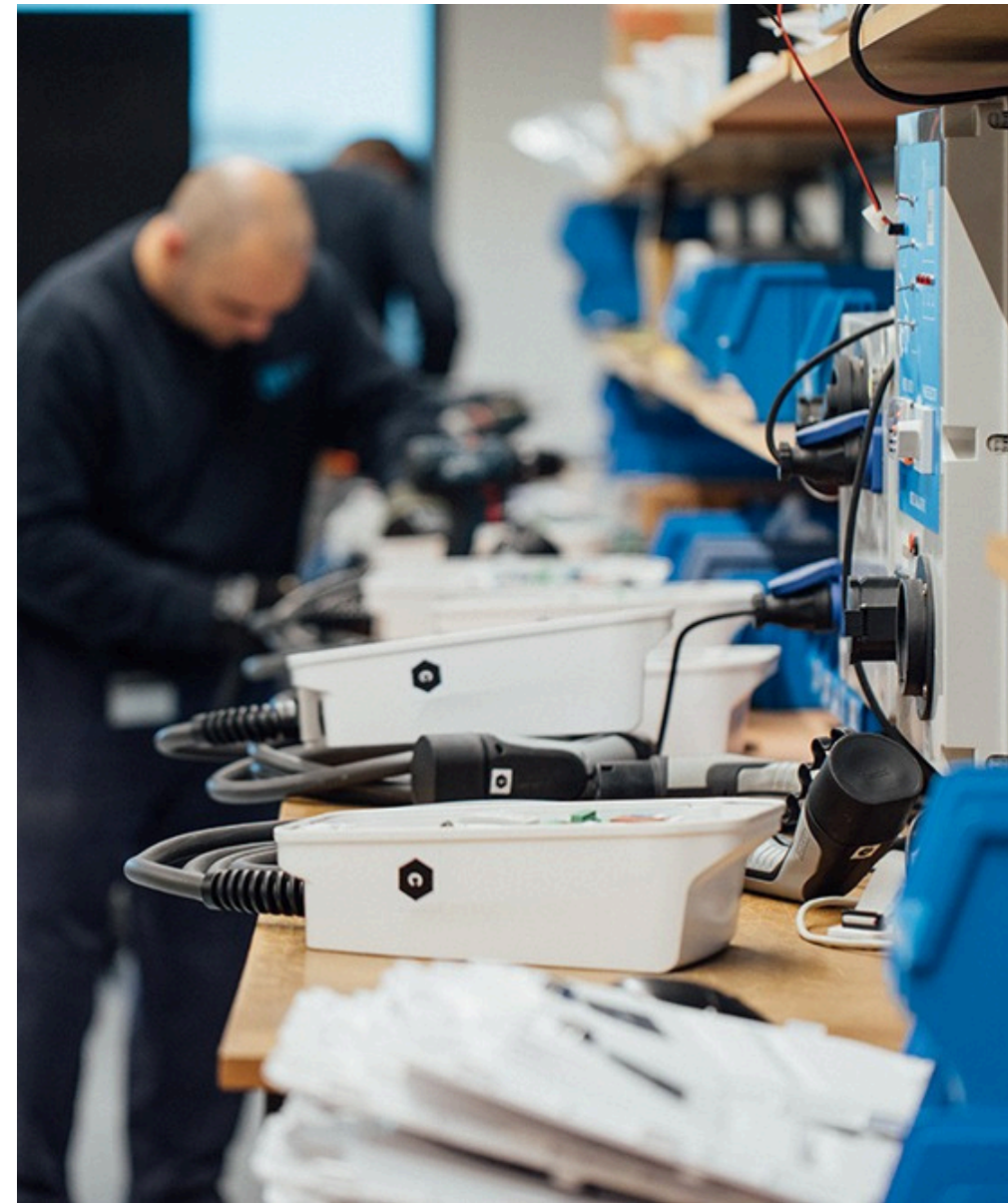
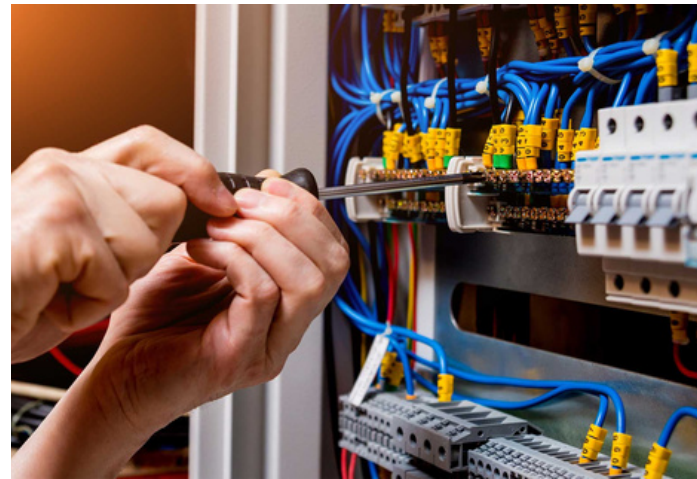


We offer the most suitable Carport and Charger solutions for your parking area.



## MANUFACTURING

At Bladeco, our manufacturing process for Bladeco Charge products is driven by innovation, precision, and sustainability. We utilize state-of-the-art facilities and advanced technologies to ensure each charging station is built to the highest standards. Our production line is meticulously managed, from the selection of premium materials to the final quality checks, ensuring reliability and durability in every unit. We prioritize eco-friendly practices throughout the manufacturing process, reducing our carbon footprint while delivering cutting-edge charging solutions. With Bladeco Charge, you can trust in the quality and performance of a product engineered to meet the demands of the future.

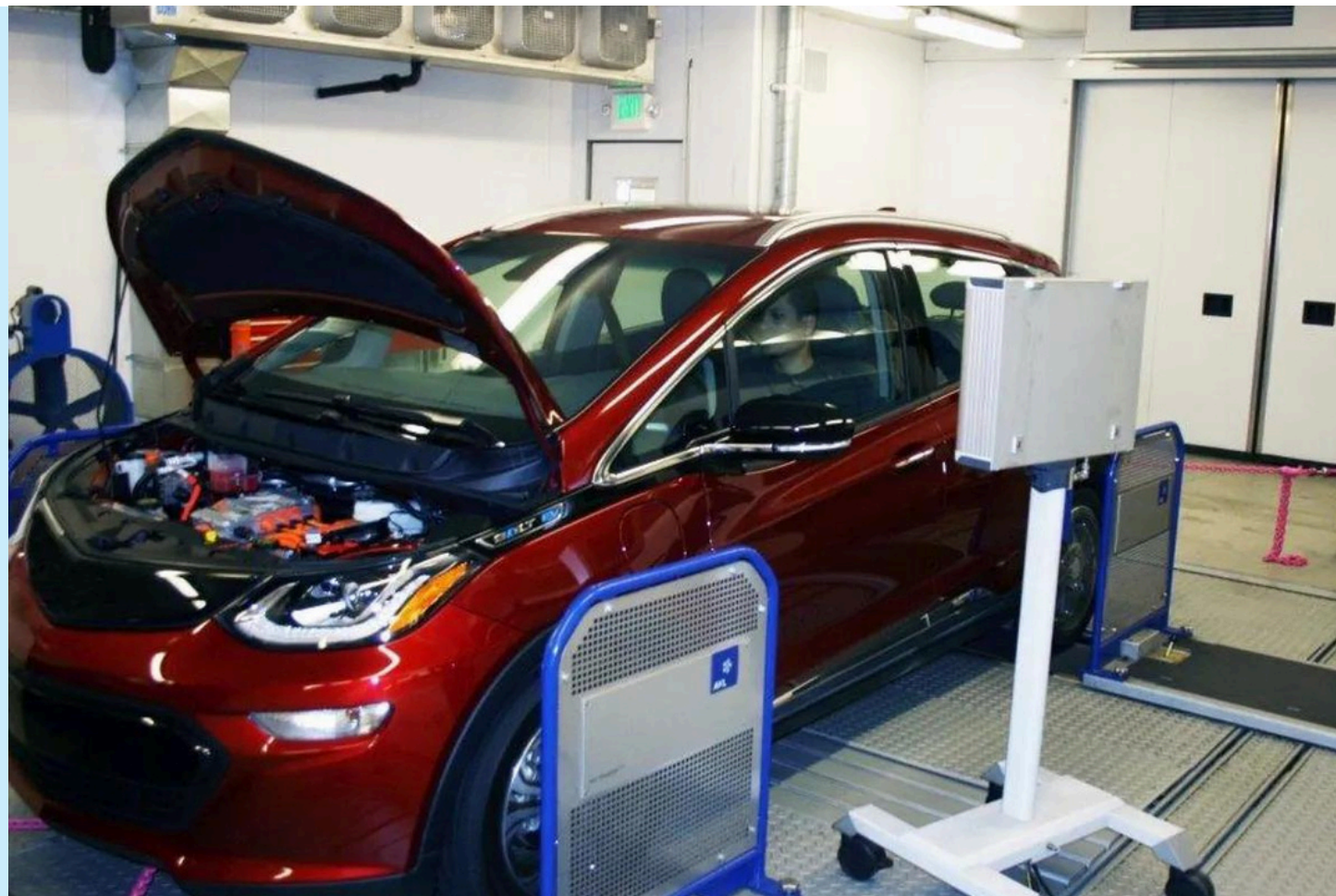


We use state-of-the-art equipment and qualified workforce in our manufacturing processes.



## QUALITY-CONTROL AND DURABILITY TESTS

At Bladeco, ensuring the highest quality and durability of our products is paramount. Each Bladeco Charge unit undergoes rigorous quality control procedures and extensive durability tests. From initial material selection to final assembly, every stage is meticulously monitored to ensure compliance with international standards. Our durability tests simulate extreme environmental conditions to guarantee that each unit can withstand harsh weather, heavy usage, and time. This commitment to quality and reliability ensures that our customers receive only the most dependable and long-lasting charging solutions.



We trust in our quality and proudly send Bladeco signed products to all over the world.





# We Work to Build a Better Future For You.

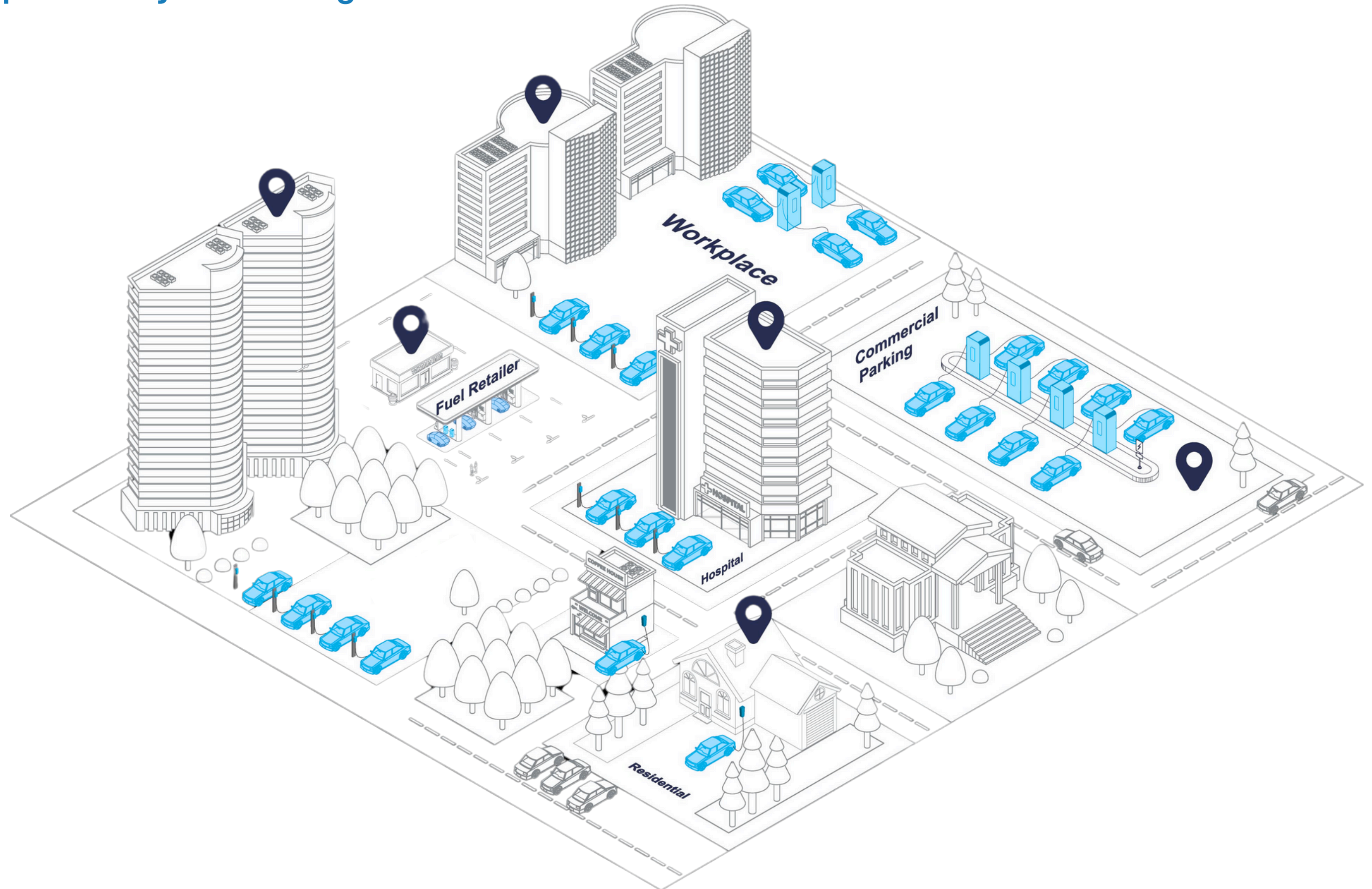


 **High Production  
Capacity**

 **Carbon Zero  
Production**

# EV Chargers

## Application by Market Segments



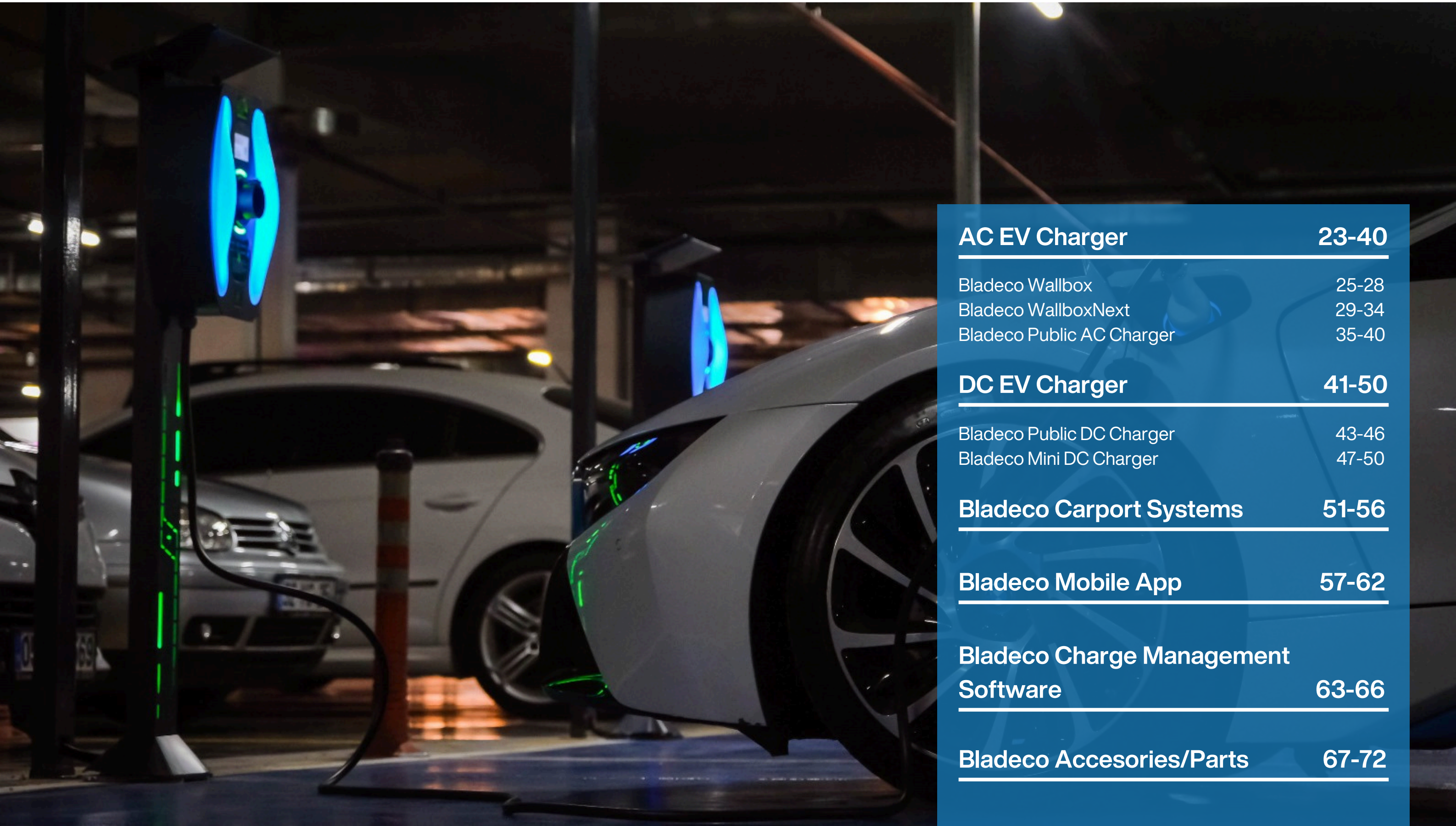


# Charger Application



Destination	Bladeco Wallbox	Bladeco AC Station	Bladeco Mini DC Fast Charger	Bladeco DC Fast Charger
Residential	✓			
Workplaces and Shopping Centres	✓	✓	✓	✓
Commercial Park		✓	✓	✓
Hospitality		✓	✓	✓
Fleet		✓	✓	✓
Fuel Retailer		✓	✓	✓





<b>AC EV Charger</b>	<b>23-40</b>
Bladeco Wallbox	25-28
Bladeco WallboxNext	29-34
Bladeco Public AC Charger	35-40
<b>DC EV Charger</b>	<b>41-50</b>
Bladeco Public DC Charger	43-46
Bladeco Mini DC Charger	47-50
<b>Bladeco Carport Systems</b>	<b>51-56</b>
<b>Bladeco Mobile App</b>	<b>57-62</b>
<b>Bladeco Charge Management Software</b>	<b>63-66</b>
<b>Bladeco Accesories/Parts</b>	<b>67-72</b>





# AC EV Chargers





# Bladeco Wallbox EV Charger

Wallbox  
EV Charger

NFC Card Reader

LED Indication

Charging Cable Option



3.7KW-22KW

## Product Introduction

Bladeco Wallbox is a cutting-edge electric vehicle charging solution designed to meet the needs of modern drivers. Combining advanced technology with user-friendly features, this wall-mounted charger offers fast, reliable, and efficient charging for electric vehicles, whether at home, in residential complexes, or in commercial settings. Engineered with safety, durability, and ease of use in mind, the Bladeco Wallbox is the perfect choice for those seeking a high-performance charging experience. Join the future of sustainable driving with Bladeco's innovative charging solutions.

## Protection Functions



Over Current  
Protection



Overcharge  
Protection



Over Voltage  
Protection



Short Circuit  
Protection



Anti-Reverse  
Protection



Overload  
Protection

With full protection to avoid all kinds of charging safety hazards, it will automatically power off after the vehicle is fully charged, to protect the car battery and prolong the working life.

Bladeco Wallbox

EV Charger

Technical Data

Features and Functions

Charging Mode	Mode 3
Vehicle Connection	IEC 62196 Tip 2 EU
AC Power Output	22-11-7.4-3.7
Mounting Options	Wall and post mounting, see accessories
Charging Status LEDs	Charging, Charging pending, error status
Communication Status LEDs	Connected / not connected during operation, signal strength during commissioning
Parent Child	Connect up to 10 child units by Wi-Fi (100 ft line of sight) and 24 child units by serial Modbus RS485. Each unit is provided with one Ethernet port.
Load Management	via OCPP or via Modbus

Communication

Interfaces	Ethernet, Wi-Fi, Modbus RS-485
User Authentification	RFID (local Whitelist, MiFare)
Configuration	Bladeco Mobile App
Back-end Protocol	OCPP 1.6, upgrade-able to OCPP 2.0
Software Upgrade	over the air (OTA)

Charging Standards	IEC 62196-2, IEC/EN 61851-1, EN 62311
Communication Protocol	OCPP 1.6J / OCPP 2.01

Electrical Design

Power Supply Voltage	V	Single phase: 208 V / 240 V AC, 60 Hz
Frequency	Hz	50/60
Rated Current Settings	A	3x32-3x16-1x32-1x16
Cross Wire Section		380 VAC 5x6 NYM Cable (30 Meter)380 VAC 5x2,5 NYM Cable (30 Meter)220 VAC 3x6 NYM Cable (30 Meter)220 VAC 3x2,5 NYM Cable (30 Meter)
Network Type		Single phase / Three phase
Energy Metering		Revenue accurate, ANSI C12.16 compliant metering
Ground Fault Protection	mA	30
DC Residual Current Monitoring		Not applicable
Over Voltage Protection	V	Under voltage: 220 V / Over voltage: 380 V
Over Current Protection	A	Current +10% above configured threshold, min. +2A, 5 seconds
Operating Altitude	m	≤ 2,000 above sea level (without derating)

General Design

Environmental Rating		Indoor and Outdoor
Dimensions W x D x H	mm	320x126x440
Weight	kg	7.4
Operating Temperature	°C	-30 +70
Relative Humidity	%	5 - 95 (non-condensing)
Colours		Turquoise, Pearl White, Dark Red, White Aluminum

EMC Standards	EN 62479
Certifications and Conformity	CE, TUV



# Bladeco WallboxNext EV Charger

WallboxNext  
EV Charger



3.7KW-22KW

## Product Introduction

WallboxNext represents the latest evolution in our electric vehicle charging solutions. Designed with the future in mind, WallboxNext offers enhanced power, improved efficiency, and a sleek design that seamlessly integrates into any environment. What sets WallboxNext apart is its high level of customization—whether you're looking for specific charging speeds, smart connectivity options, or personalized aesthetics, WallboxNext adapts to your needs. Engineered by Bladeco to deliver exceptional performance, this charging station not only meets but exceeds the expectations of modern EV users, providing a reliable and forward-thinking charging experience.

## Product Configurable Features



Power Management System



RFID Card Reader



Touchscreen Display



Protection Fuse



Residual Current Relay



Energy Meter

## Color Options



# Bladeco WallboxNext

## EV Charger Variations



	Plus Edition	Standard Edition	Eco Edition
Power Management	✓	✓	
RFID	✓	✓	✓
Touch Screen	✓		
Fuse	✓		
Residual Current Relay	✓	✓	
Energy Meter	✓		
LED Status	✓	✓	✓
Emergency Stop Button	✓	✓	✓



Bladeco WallboxNext

EV Charger

Technical Data

Features and Functions

Charging Mode	Mode 3
Vehicle Connection	IEC 62196 Tip 2 EU
AC Power Output	22-11-7.4-3.7
Mounting Options	Wall and post mounting, see accessories
Charging Status LEDs	Charging, Charging pending, error status
Communication Status LEDs	Connected / not connected during operation, signal strength during commissioning
Parent Child	Connect up to 10 child units by Wi-Fi (100 ft line of sight) and 24 child units by serial Modbus RS485. Each unit is provided with one Ethernet port.
Load Management	via OCPP or via Modbus

Communication

Interfaces	Ethernet, Wi-Fi, Modbus RS-485
User Authentification	RFID (local Whitelist, MiFare)
Configuration	Bladeco Mobile App
Back-end Protocol	OCPP 1.6, upgrade-able to OCPP 2.0
Software Upgrade	over the air (OTA)

Charging Standards	IEC 62196-2, IEC/EN 61851-1, EN 62311
Communication Protocol	OCPP 1.6J / OCPP 2.01

Electrical Design

Power Supply Voltage	V	Single phase: 208 V / 240 V AC, 60 Hz
Frequency	Hz	50/60
Rated Current Settings	A	3x32-3x16-1x32-1x16
Cross Wire Section		380 VAC 5x6 NYM Cable (30 Meter)380 VAC 5x2,5 NYM Cable (30 Meter)220 VAC 3x6 NYM Cable (30 Meter)220 VAC 3x2,5 NYM Cable (30 Meter)
Network Type		Single phase / Three phase
Energy Metering		Revenue accurate, ANSI C12.16 compliant metering
Ground Fault Protection	mA	30
DC Residual Current Monitoring		Not applicable
Over Voltage Protection	V	Under voltage: 220 V / Over voltage: 380 V
Over Current Protection	A	Current +10% above configured threshold, min. +2A, 5 seconds
Operating Altitude	m	≤ 2,000 above sea level (without derating)

General Design

Environmental Rating		Indoor and Outdoor
Dimensions W x D x H	mm	320x126x440
Weight	kg	7.4
Operating Temperature	°C	-30 +70
Relative Humidity	%	5 - 95 (non-condensing)
Colours		Turquoise, Pearl White, Dark Red, White Aluminum

EMC Standards	EN 62479
Certifications and Conformity	CE, TUV



# Bladeco Public AC Charger

Public  
AC Charger



Socketed

with Cable

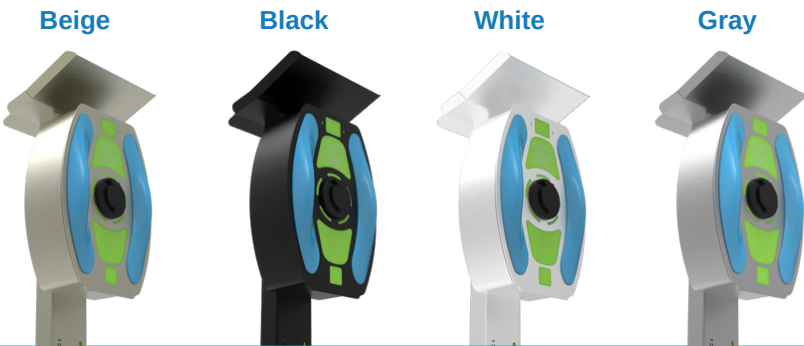


3.7KW-22KW

## Product Introduction

Bladeco's Public AC Charging Stations are designed to meet the growing demand for accessible and reliable electric vehicle charging solutions in public spaces. These stations are equipped with advanced safety features, user-friendly interfaces, and high-efficiency charging technology to provide a seamless experience for EV drivers. Our AC charging stations are suitable for installation in a wide range of locations, including parking lots, shopping centers, and public roadsides, ensuring that electric vehicle owners have convenient access to power wherever they go. With Bladeco, you can trust in the durability, performance, and scalability of our charging infrastructure, tailored to support the future of sustainable transportation.

### Available Other Colors



## Highlights

- User-Friendly Interface:** The stations come with an intuitive display and easy-to-use controls, allowing for a smooth and hassle-free charging experience.
- High-Efficiency Charging:** Equipped with state-of-the-art charging technology, our stations deliver optimal power output, reducing charging time while maintaining energy efficiency.
- Advanced Safety Features:** Safety is our priority. The stations include built-in protections against overcharging, overheating, and short circuits to ensure the safety of both the vehicle and the user.
- Durable and Weather-Resistant Design:** Bladeco's charging stations are built to withstand various environmental conditions, ensuring longevity and consistent performance in outdoor installations.
- Scalability:** Our AC charging stations are designed to be easily scalable, allowing for the seamless expansion of charging infrastructure as demand grows.
- Smart Connectivity:** Integrated with smart technology, the stations offer remote monitoring, diagnostics, and software updates, ensuring they remain up-to-date and fully operational.
- Versatile Installation Options:** Suitable for a wide range of public locations, our charging stations can be installed in parking lots, shopping centers, highways, and other public areas, making EV charging accessible everywhere.

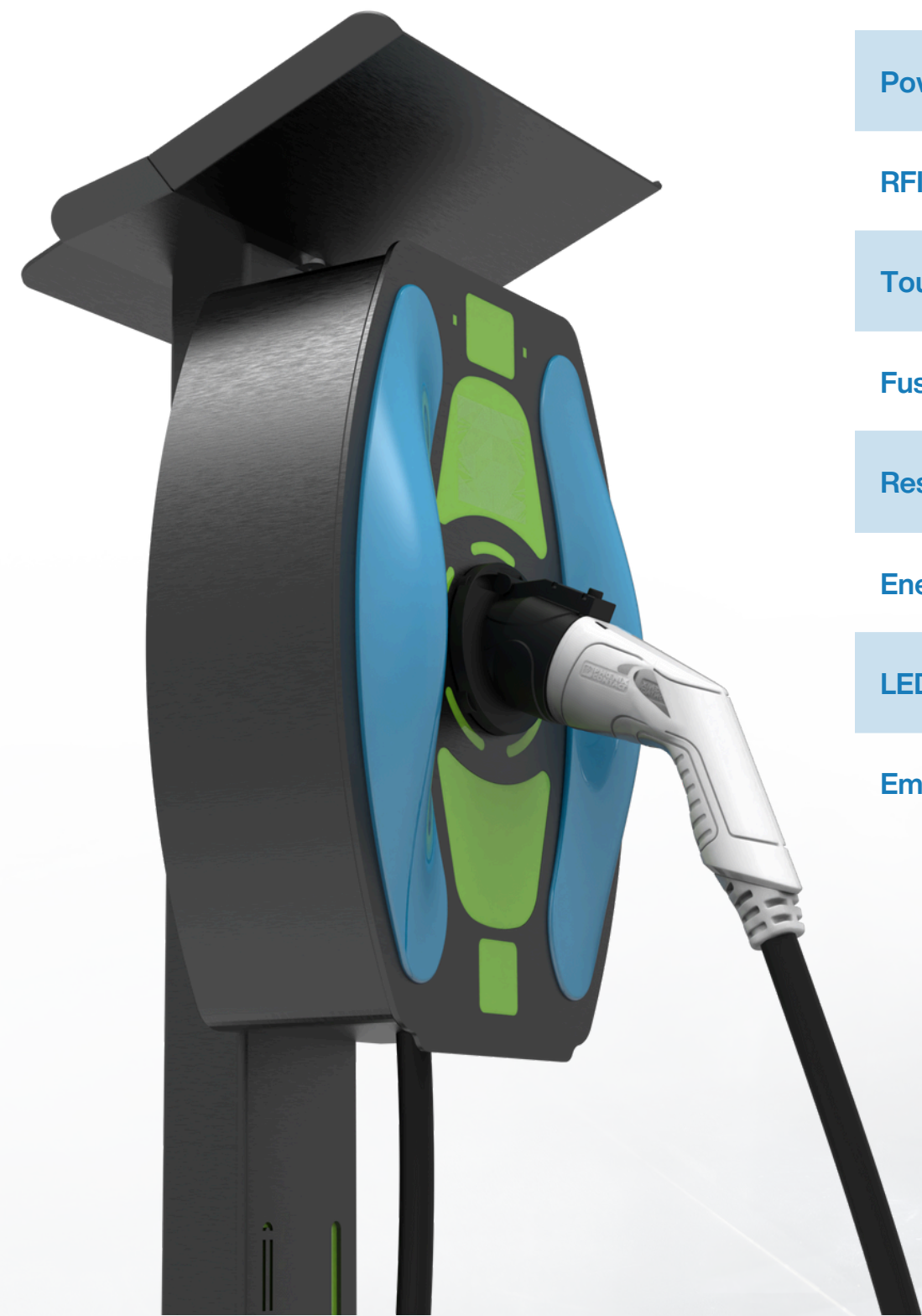
Bladeco charging stations work integrated with the bladeco app. With the Bladeco Charge app, you can easily manage your charging transactions and access balance and charging location information.





# Bladeco Public

## AC Charger Variations



	Socket Version	Wired Version
Power Management	✓	✓
RFID	✓	✓
Touch Screen	✓	✓
Fuse	✓	✓
Residual Current Relay	✓	✓
Energy Meter	✓	✓
LED Status	✓	✓
Emergency Stop Button	✓	✓



Bladeco Public

AC Charger

Technical Data

Features and Functions

Charging Mode	Mode 3
Vehicle Connection	IEC 62196 Tip 2 EU
AC Power Output	22-11-7.4-3.7
Mounting Options	Wall and post mounting, see accessories
Charging Status LEDs	Charging, Charging pending, error status
Communication Status LEDs	Connected / not connected during operation, signal strength during commissioning
Parent Child	Connect up to 10 child units by Wi-Fi (100 ft line of sight) and 24 child units by serial Modbus RS485. Each unit is provided with one Ethernet port.
Load Management	via OCPP or via Modbus

Communication

Interfaces	Ethernet, Wi-Fi, Modbus RS-485
User Authentication	RFID (local Whitelist, MiFare)
Configuration	Bladeco Mobile App
Back-end Protocol	OCPP 1.6, upgrade-able to OCPP 2.0
Software Upgrade	over the air (OTA)

Charging Standards	IEC 62196-2, IEC/EN 61851-1, EN 62311
Communication Protocol	OCPP 1.6J / OCPP 2.01

Electrical Design

Power Supply Voltage	V	Single phase: 208 V / 240 V AC, 60 Hz
Frequency	Hz	50/60
Rated Current Settings	A	3x32-3x16-1x32-1x16
Cross Wire Section		380 VAC 5x6 NYM Cable (30 Meter)380 VAC 5x2,5 NYM Cable (30 Meter)220 VAC 3x6 NYM Cable (30 Meter)220 VAC 3x2,5 NYM Cable (30 Meter)
Network Type		Single phase / Three phase
Energy Metering		Revenue accurate, ANSI C12.16 compliant metering
Ground Fault Protection	mA	30
DC Residual Current Monitoring		Not applicable
Over Voltage Protection	V	Under voltage: 220 V / Over voltage: 380 V
Over Current Protection	A	Current +10% above configured threshold, min. +2A, 5 seconds
Operating Altitude	m	≤ 2,000 above sea level (without derating)

General Design

Environmental Rating		Indoor and Outdoor
Dimensions W x D x H	mm	320x126x440
Weight	kg	7.4
Operating Temperature	°C	-30 +70
Relative Humidity	%	5 - 95 (non-condensing)
Colours		Turquoise, Pearl White, Dark Red, White Aluminum

EMC Standards	EN 62479
Certifications and Conformity	CE, TUV



# DC EV Chargers



# Bladeco Public DC Charger 2 Guns

ULTRA  
FAST

Public  
DC Charger



Up to 2  
vehicles at the  
same time  
(2 in DC)

## Product Introduction

Bladeco's Public DC Charger with 2 Guns is engineered to provide fast and efficient charging for electric vehicles in high-traffic public areas. This advanced charger is designed for convenience, offering dual charging ports that accommodate multiple vehicles simultaneously. With cutting-edge technology, robust safety features, and user-friendly operation, it ensures reliable and rapid charging, making it an ideal solution for busy urban environments, commercial centers, and transit hubs. The charger's durable construction and smart connectivity options guarantee long-lasting performance and easy integration into existing EV infrastructure.

## Highlights

**Ultra-Fast Charging:** Our DC charger supports ultra-fast charging capabilities, significantly reducing the time required to charge electric vehicles, making it ideal for high-traffic areas.

**Dual Charging Ports:** Equipped with two guns, this charger allows simultaneous charging of two vehicles, maximizing efficiency and convenience for users.

**High Power Output:** With high power output, the charger ensures that even the most demanding electric vehicles can be charged quickly and effectively.

**Advanced Cooling System:** The charger features an advanced cooling system to maintain optimal performance during continuous use, ensuring safety and reliability.

**Robust and Durable Design:** Built with durable materials, the charger is designed to withstand harsh weather conditions and constant usage in public spaces.

**Smart Features:** Integrated with smart technology, including remote monitoring, diagnostics, and software updates, ensuring the charger remains fully operational and up-to-date.

**User-Friendly Interface:** The charger includes a simple, intuitive interface that makes the charging process straightforward for all users.

**Comprehensive Safety Protections:** The charger is equipped with multiple safety features, including overcurrent, overvoltage, and short-circuit protection, ensuring the safety of both vehicles and users.

Bladeco charging stations work integrated with the bladeco app. With the Bladeco Charge app, you can easily manage your charging transactions and access balance and charging location information.



Download on the  
App Store

GET IT ON  
Google Play



90KW-300KW

Bladeco Public  
DC Charger

Technical Data

AC Nominal Input

Voltage	V	400 ± 10%
Current at Nom. Voltage per Phase	A	240/332/423/515 (incl. AC socket)
Frequency	Hz	50/60
Power Factor	cos phi	> 0.99 at full load
THDi	%	3
Network Type		TN-C, TN-S, or TT

DC Output

Rated Power	kW	120/180/240/300
Upgradeability	kW	up to 300
Voltage (Range)	V	150 - 1.000
Outlet Options		DC: 2 x CCS2 Optional AC: AC Type 2 socket (32 A), 22 kW incl. RCD
Current of Connected Cables (max.)	A	CCS2: 1 x 400 (air-cooled cable), 1 x 500 (liquid-cooled cable)
Efficiency Factor	%	> 95 rated, > 96 peak
Cable Lengths	m	5



Electrical Design

Operating Environment		Indoor and Outdoor
Operating Temperature	°C	– 25 +55 (without power derating up to + 35)
Operating Altitude	m	≤ 2,000 above sea level (without derating)
Relative Humidity	%	5 - 95 (non-condensing)

Mechanical Specifications

Enclosure Protection		IP54, IK10
Housing Material		Powder-coated galvanized steel, anti-graffiti paintPowder-coated Aluminum, anti-graffiti paint
Colours		Turquoise, Pearl White, Dark Red, White Aluminum
Overall Dimensions W x D x H	mm	845 x 820 x 2,300
Foundation Dimensions W x D	mm	680 x 620
Weight	kg	350 - 690

General Spesification

Screen and LEDs	Full-color 21.5" touchscreen, status LED
User Authentication and Payment	RFID, QR code + Smartphone
Network Connection	Ethernet 10/100 base; 2G; 3G; 4G (LTE)
Electric Safety Device	Surge protection, overvoltage category III
Metering Options	Optional: DC meter per outlet (standard meter) AC meter for Type 2 outlet (standard meter), AC income meter
Remote Management	Remote access, over-the-air (OTA) software updates, external load management via modbus)



Bladeco Public  
DC Charger

Available Other Colors

Space Gray



Copper



Sage Green



Olive Green



Ice Blue



Gold



Deep Red



Olive Green

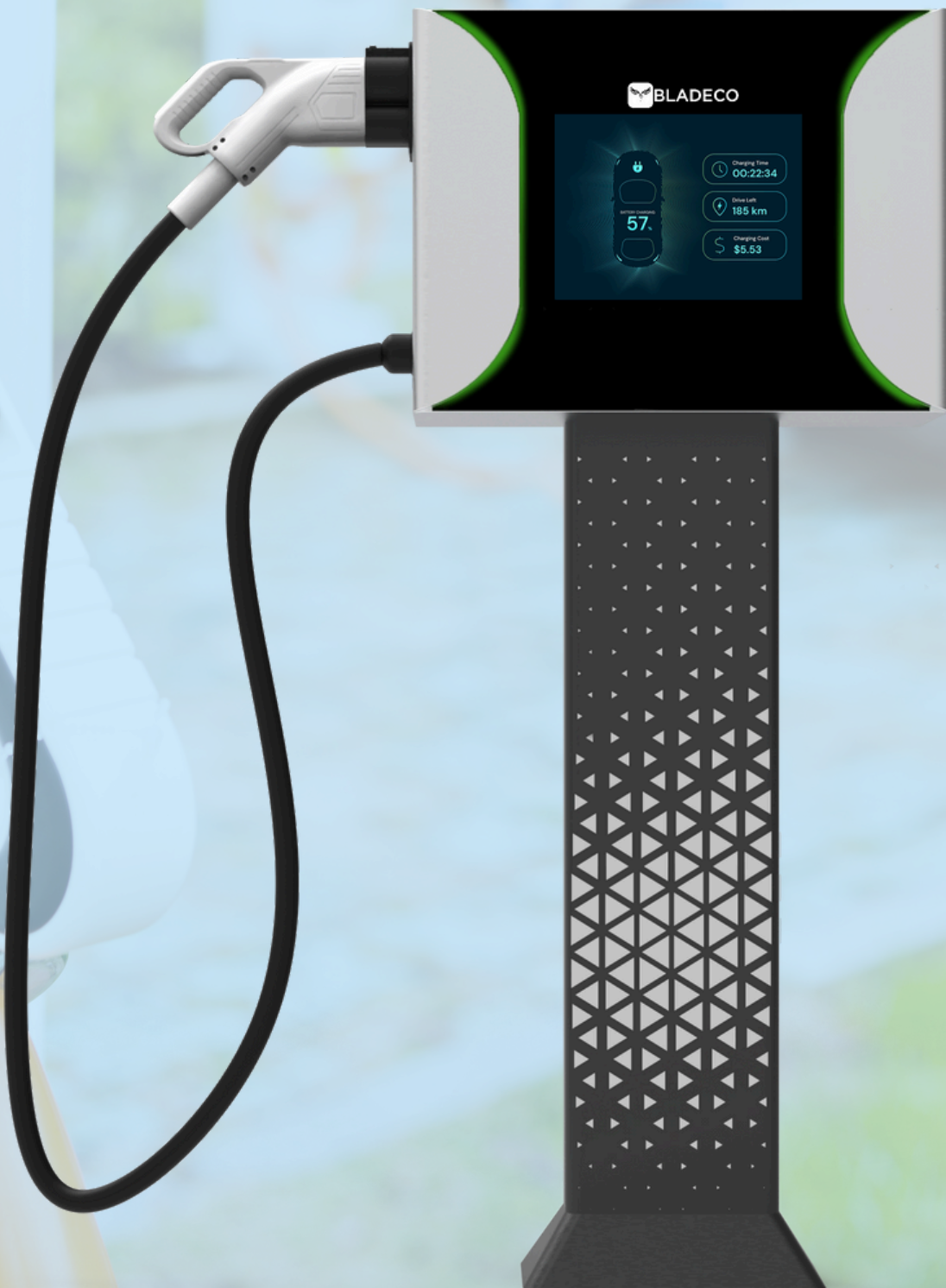




# Bladeco Home Mini DC Charger 1 Gun

ULTRA  
FAST

Home Mini  
DC Charger



## Product Introduction

The Bladeco Home Mini DC Charger with 1 Gun is a compact, high-performance solution designed for home use. This sleek and efficient charger delivers fast DC charging in a space-saving design, perfect for residential settings. With its advanced safety features, intuitive interface, and reliable performance, it provides homeowners with a convenient and powerful charging option for their electric vehicles. The charger's modern design and customizable settings make it an excellent choice for those seeking to enhance their home's EV charging capabilities while ensuring optimal energy management.

## Highlights

**Compact Design:** Space-saving form factor, ideal for residential use.

**Fast Charging:** Delivers efficient DC charging for quick vehicle turnaround.

**User-Friendly Interface:** Intuitive controls for easy operation and monitoring.

**Advanced Safety Features:** Equipped with overcurrent and overvoltage protection for secure charging.

**Customizable Settings:** Adjustable charging modes to suit various energy needs.

**Durable Construction:** Built to withstand outdoor conditions with robust materials.

**Energy Efficiency:** Optimized to minimize energy consumption while maximizing charging speed.

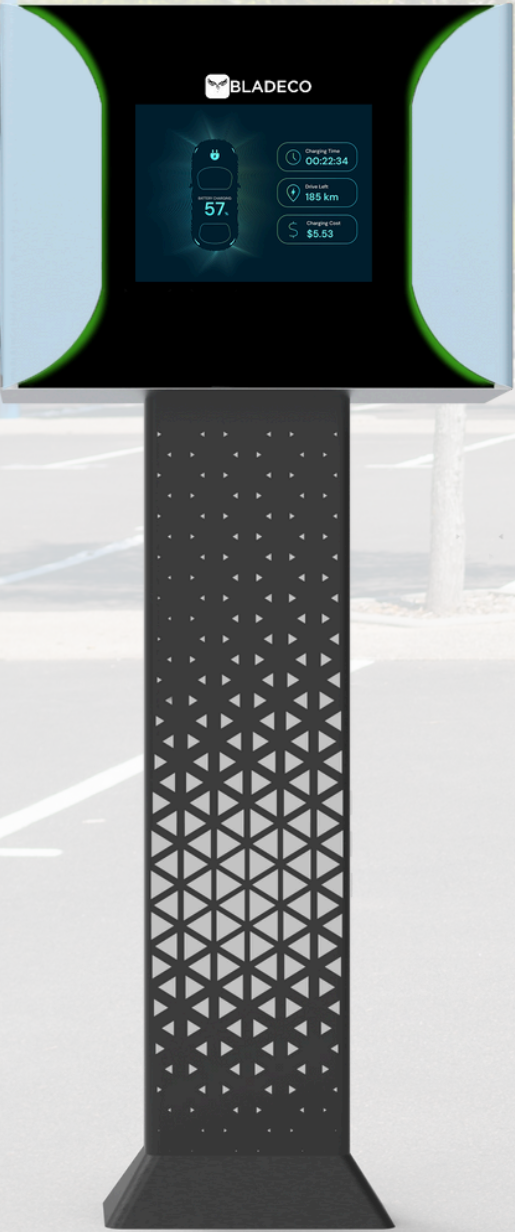
The Bladeco Home Mini DC Charger 1 Gun offers fast, efficient charging in a compact, user-friendly design, perfect for residential settings. With advanced safety features and customizable settings, it ensures a secure and energy-efficient charging experience.



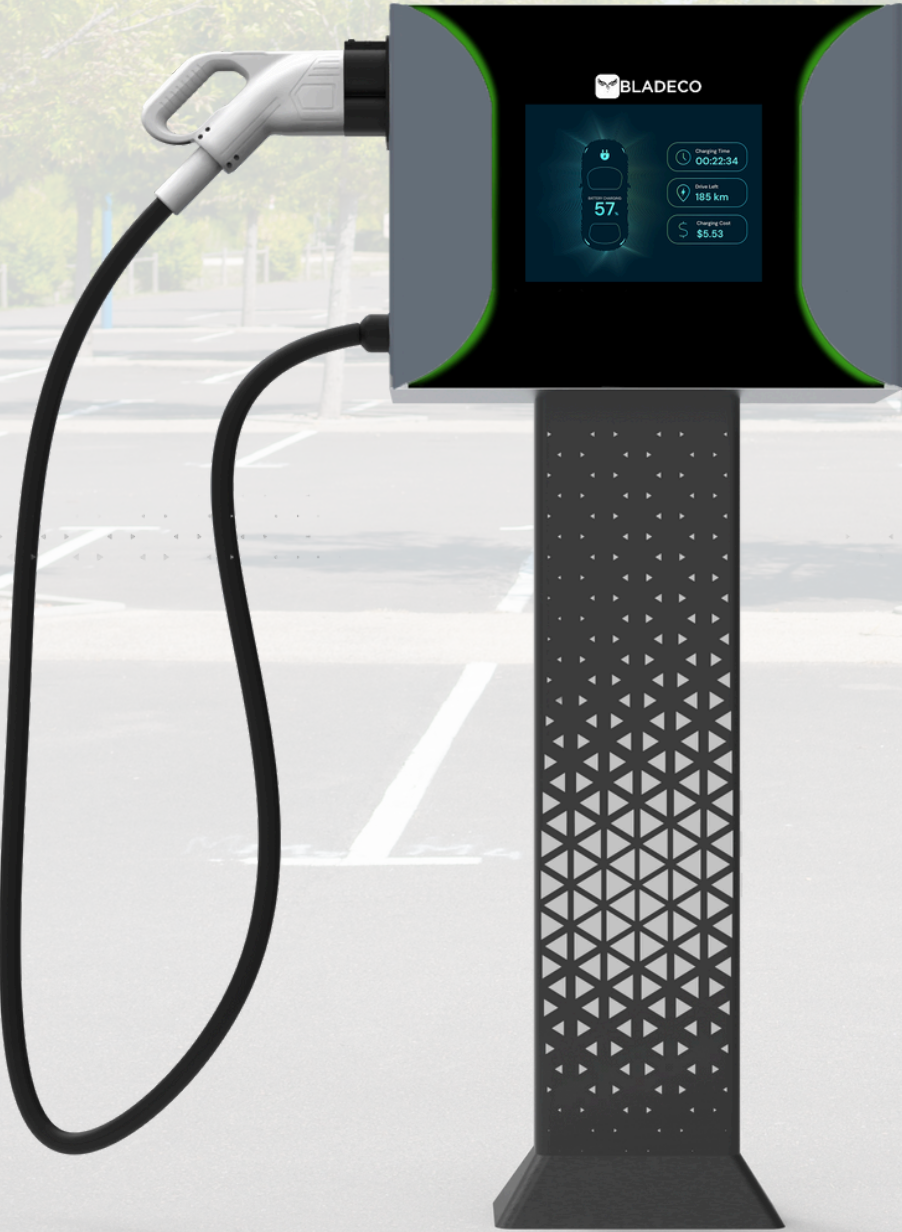
Bladeco Home Mini  
DC Charger  
1 Gun

Available Other Colors

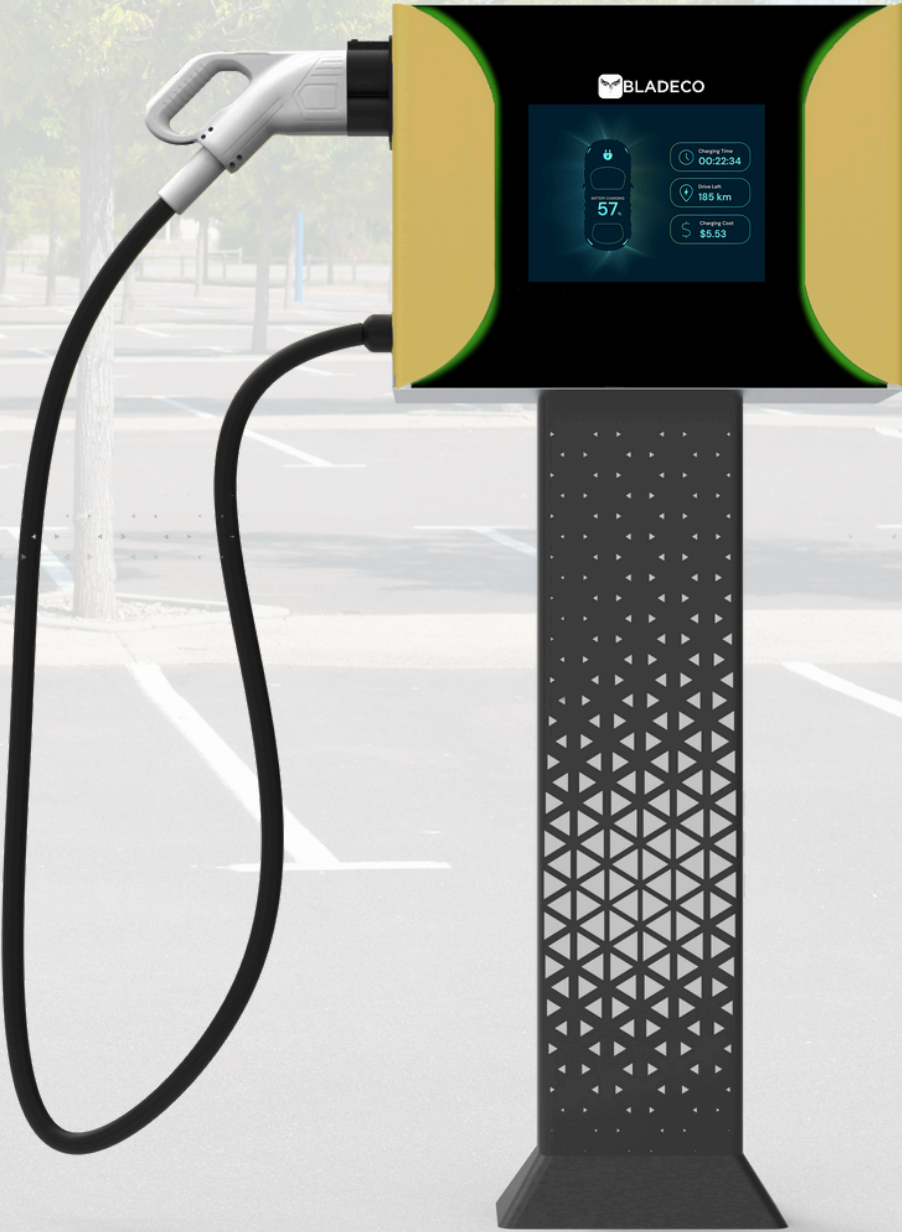
Ice Blue



Deep Gray



Gold





Bladeco Home Mini

DC Charger

Technical Data

AC Nominal Input

Voltage	V	400 ± 10%
Current at Nom. Voltage per Phase	A	50 (30 kW) / 100 (60 kW)
Frequency	Hz	50/60
Power Factor	cos phi	> 0.99 at full load
THDi	%	3
Network Type		TN-C, TN-S, or TT

DC Output

Rated Power	kW	30/60
Upgradeability	kW	up to 60
Voltage (Range)	V	150 - 1.000
Outlet Options		DC: 1 x CCS2 Optional AC: AC Type 2 socket (32 A), 22 kW incl. RCD
Current of Connected Cables (max.)	A	CCS2: 1 x 100 (air-cooled cable)
Efficiency Factor	%	> 95 rated, > 96 peak
Cable Lengths	m	5

Environmental Conditions

Operating Environment		Indoor and Outdoor
Operating Temperature	°C	– 25 +55
Operating Altitude	m	≤ 2,000 above sea level (without derating)
Relative Humidity	%	5 - 95 (non-condensing)

Mechanical Specifications

Enclosure Protection		IP54, IK10
Housing Material		Powder-coated galvanized steel, anti-graffiti paintPowder-coated Aluminum, anti-graffiti paint
Colours		Turquoise, Pearl White, Dark Red, White Aluminum
Overall Dimensions W x D x H	mm	650 x 580 x 1,500
Foundation Dimensions W x D	mm	610 x 550
Weight	kg	55 - 95

General Spesification

Screen and LEDs	Full-color 12" touchscreen, status LED
User Authentication and Payment	RFID, QR code + Smartphone
Network Connection	Ethernet 10/100 base; 2G; 3G; 4G (LTE)
Electric Safety Device	Surge protection, overvoltage category III
Metering Options	Optional: DC meter per outlet (standard meter) AC meter for Type 2 outlet (standard meter), AC income meter
Remote Management	Remote access, over-the-air (OTA) software updates, external load management via modbus)



# Carport Systems

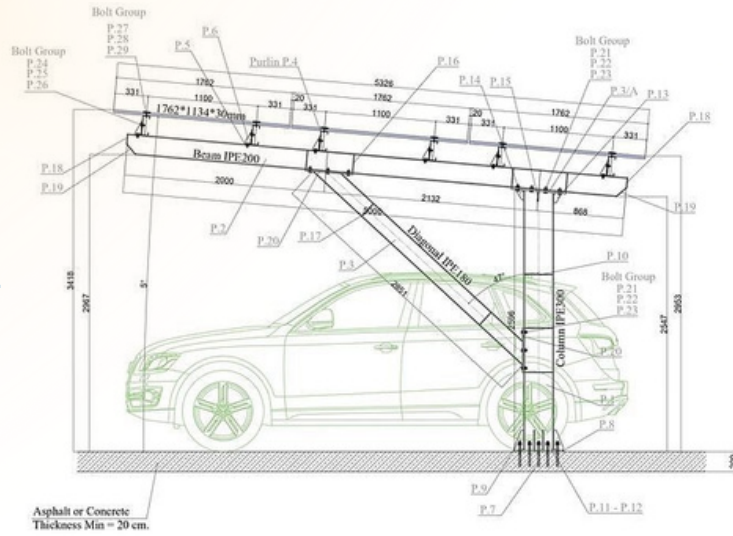




# Bladeco Carport Systems

Bladeco Solar Powered Carport Systems are designed to seamlessly integrate solar energy solutions with modern parking infrastructure. Our carports not only provide shelter for vehicles but also generate clean, renewable energy, reducing carbon footprints and energy costs. With robust construction and customizable designs, Bladeco's Solar Powered Carports are an innovative solution for sustainable urban development, making them an ideal choice for commercial, residential, and public spaces.

The Bladeco Solar Powered Carport System is a pioneering solution that seamlessly integrates advanced solar technology with durable, high-quality construction. Designed to provide both protection for vehicles and the generation of clean, renewable energy, this system transforms ordinary parking spaces into energy-efficient power sources. Ideal for residential complexes, commercial facilities, and public spaces, the Bladeco Solar Powered Carport System offers a sustainable approach to energy management, helping to reduce carbon footprints while meeting the growing demand for green energy solutions.



**Integrated Solar Panels:** Generates clean, renewable energy directly from the carport roof, reducing energy costs.



**Durable Construction:** Built with high-quality materials to withstand various weather conditions, ensuring long-term durability.



- **Customizable Designs:** Tailored to fit different architectural styles and parking requirements, enhancing aesthetic appeal and functionality.



**Environmentally Friendly:** Reduces carbon footprint by harnessing solar power, contributing to sustainable development.



**Efficient Energy Use:** Powers electric vehicle charging stations and other facilities, maximizing energy efficiency.





Bladeco

Carport Systems

Technical Data

Number of Vehicles		2 Vehicles
Number of Solar Panels		15
Type of Solar Panel		BLDC550-P12 Waterproof
Maximum Power of Solar Panel	Wp	550
Total Installed Power	kWp	8.25
Total Solar Panel Area	m <sup>2</sup>	42
Solar Panel Slope	°	14
Usage Area Dimensions (WxD)	m	3.99x5.20
Minimum Indoor Height	m	2.4
Maximum Indoor Height	m	3.0
Solar Panel Orientation		South
Construction Material		Steel

Solar Panel

Maximum Power	Pmax	550Wp
Module Efficiency	%	21.28
Cell Size	mm	182x91
Number of Cells		144 (24x6)
Weight	kg	29
Panel Size	mm	2279x1134x35

Inverter

Maximum PV Array Input Power	Wp	10000
Maximum PV Input Voltage	V	1000
MPPT Voltage Range	V	180~950
Maximum Input Current (MPPT A / (MPPT B)	A	16/16
Nominal AC Output Power	W	6000
Maximum AC Output Apparent Power	VA	6600
Maximum AC Output Current	A	9.7
Communication Interface		Dongle Wi-Fi

EV Charger

Voltage Range	V	220-400
Nominal Output Current	A	32
Usable Power	kW	22





**Bladeco Mobile App**

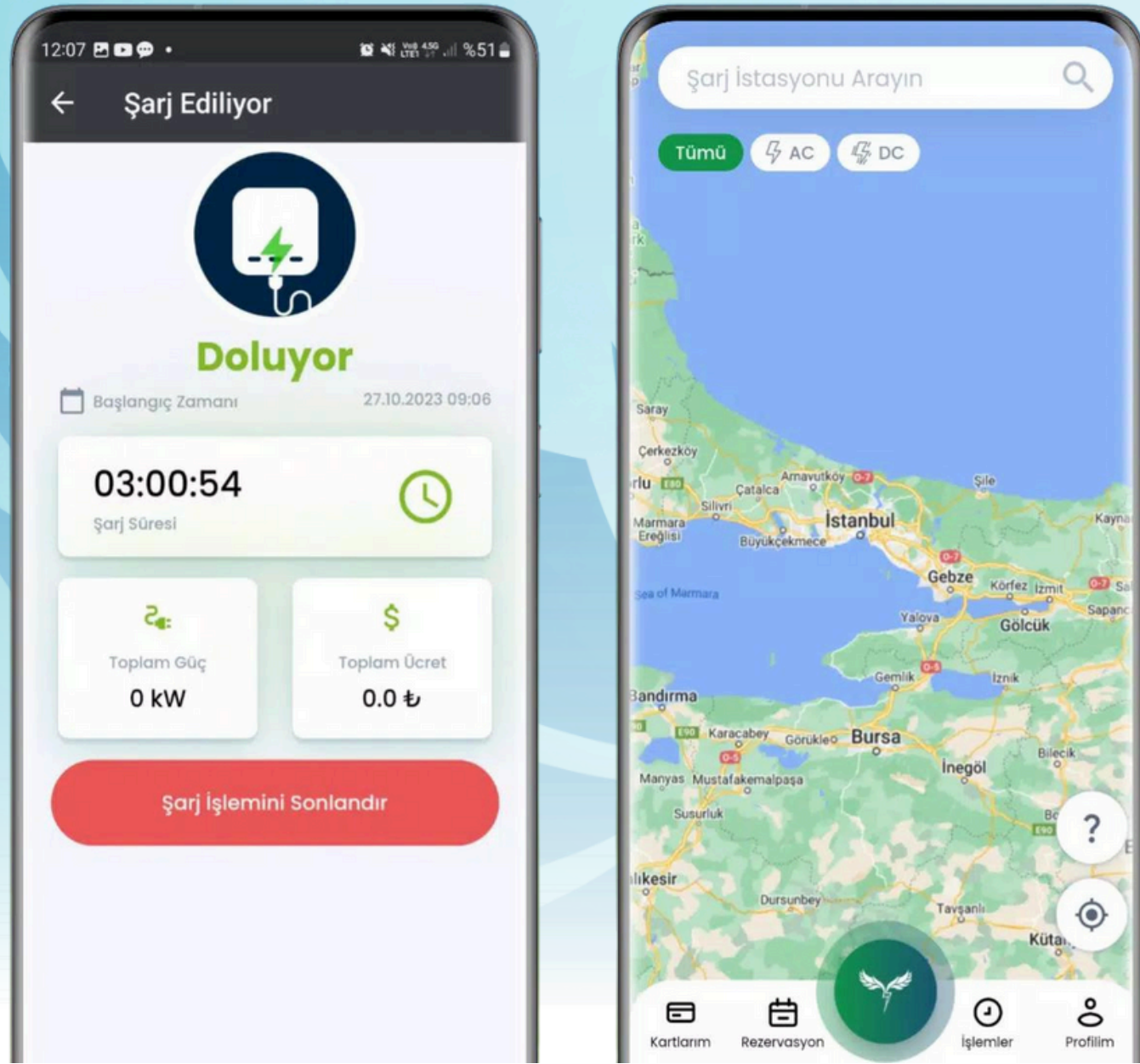




# Bladeco Charge Mobile App

Bladeco Solar Powered Carport Systems are designed to seamlessly integrate solar energy solutions with modern parking infrastructure. Our carports not only provide shelter for vehicles but also generate clean, renewable energy, reducing carbon footprints and energy costs. With robust construction and customizable designs, Bladeco's Solar Powered Carports are an innovative solution for sustainable urban development, making them an ideal choice for commercial, residential, and public spaces.

## Power in Your Pocket, Charge On the Go!



### Station Locations and Navigation

The Bladeco Charge app shows the locations of the nearest charging stations on a map and provides navigation to guide users to these stations.

### Charging Session Management

Users can start, stop, and monitor their charging sessions through the app, giving them control over their charging process.

### Easy Payment

The app offers secure payment options for charging sessions, allowing users to pay with credit cards or other digital payment methods.

### Real-Time Station Status

Users can view the current status of charging stations (available, occupied, or under maintenance) in real-time to choose the best option.

### User-Friendly Interface

The app features a simple and intuitive interface that allows users to quickly access the information they need.

### Billing and History

Users can view and download their past charging sessions and invoices directly from the app.

### Notifications and Updates

The app provides notifications and updates about charging sessions to keep users informed.

### Customer Support

Users can contact customer support directly through the app for any assistance they might need.

You can download the Bladeco Charge app and start managing your electric vehicle's charging sessions effortlessly. Find charging stations, start sessions, and make payments all within a single app. Download now and enhance your charging experience today!





# Bladeco Charge Mobile App

Charging your vehicle has never been easier  
with the Bladeco Charge App.

---

Fast and  
Secure



Wide Station  
Network



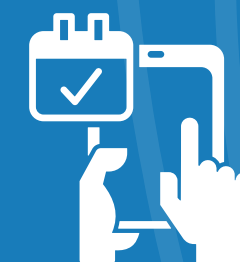
Mobile Pay and  
Charge History



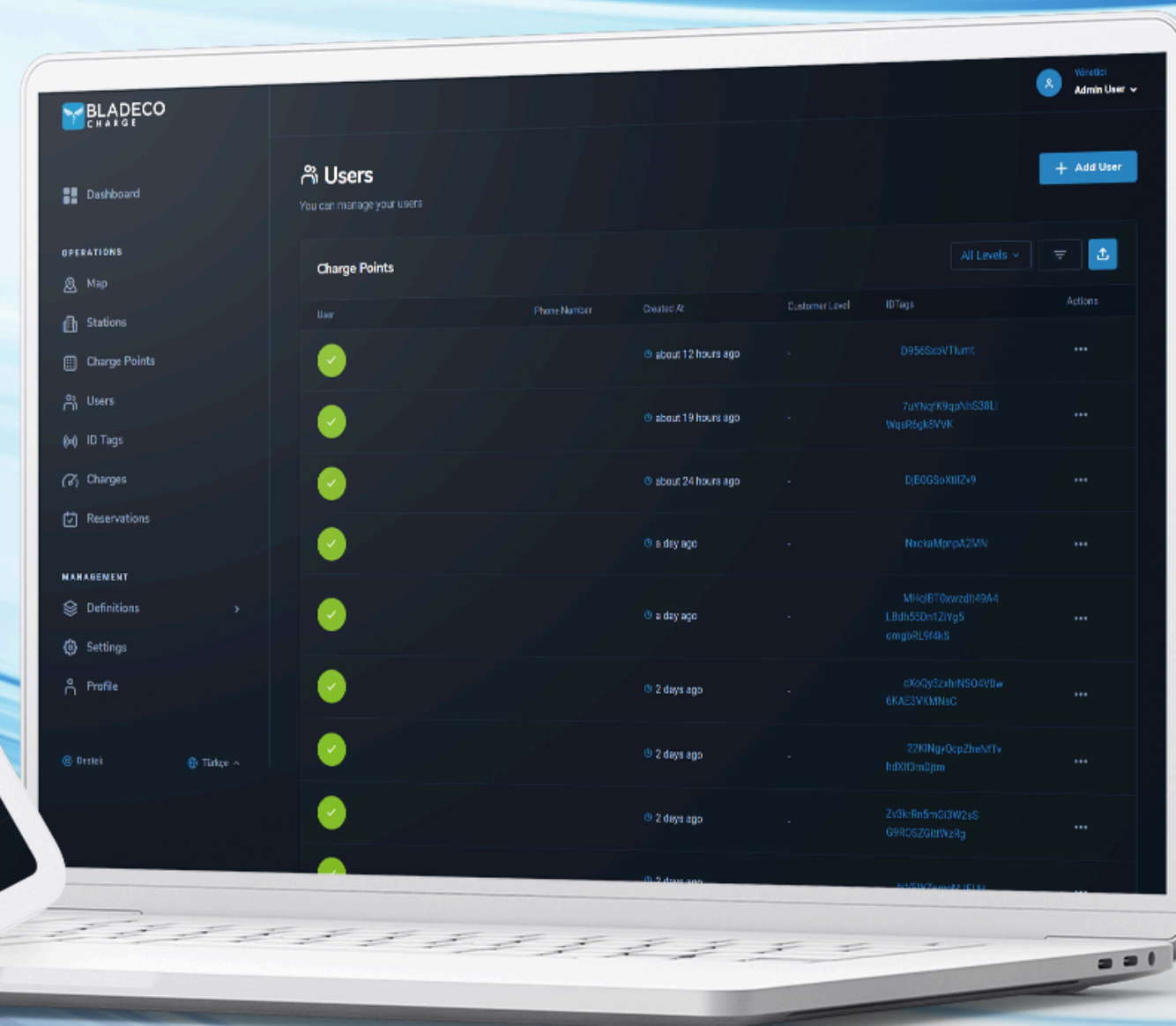
Current Energy  
Consumption



Charger  
Reservation







# Bladeco Charge Management



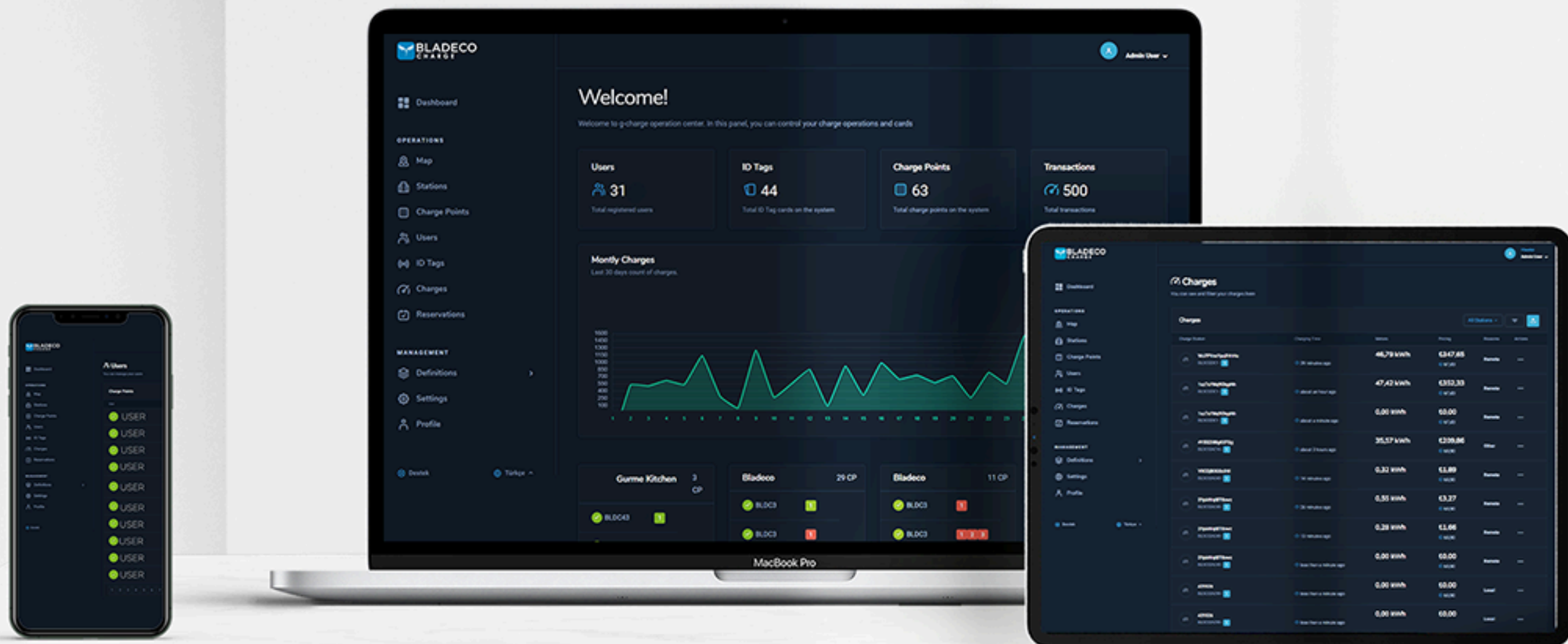
The Bladeco Charge Management application offers a modern, intuitive, and comprehensive interface designed to simplify the management of electric vehicle charging stations. The user-friendly dashboard not only facilitates essential functions like monitoring charging sessions, managing schedules, and analyzing energy consumption, but also integrates advanced features such as pricing and customer management, all within a single platform.

Tailored modules for large-scale commercial areas such as residential complexes and shopping malls make it easier to manage multiple charging devices and user groups. These modules allow seamless navigation between different sites and provide customizable control settings to meet the specific needs of each location.

With its clean design and responsive controls, the Bladeco Charge Management interface ensures that even the most complex tasks are performed with ease, enabling you to manage your charging infrastructure confidently and efficiently.

# Entire Charging Process in One App.

The Bladeco Charge Management application is designed specifically for commercial clients and sites with multiple charging devices. This powerful tool streamlines the management of electric vehicle charging processes by providing a centralized platform where all charging activities can be monitored and controlled from a single panel. Whether you're overseeing a network of charging stations across multiple locations or managing high-demand usage at a single site, Bladeco Charge Management offers the efficiency and control needed to optimize your operations. With this application, you can ensure that your electric vehicle charging infrastructure is running smoothly, effectively, and with maximum uptime.





## Bladeco Accessories and Parts





# Bladeco Accessories and Parts

The best accessories and spare parts for you and your electric vehicles.

With our accessories and spare parts solutions that will complement Bladeco products and your electric vehicles; Enjoy a unique and fast charging experience without interruption.



## Type 2 Male-Female Cable

The Type 2 Male-Female Cable by Bladeco is a robust and reliable connector designed for optimal performance. It ensures efficient energy transfer between your EV and the charging station, providing a secure and stable connection every time.

Part Code

**T2-MF-CAB-003**

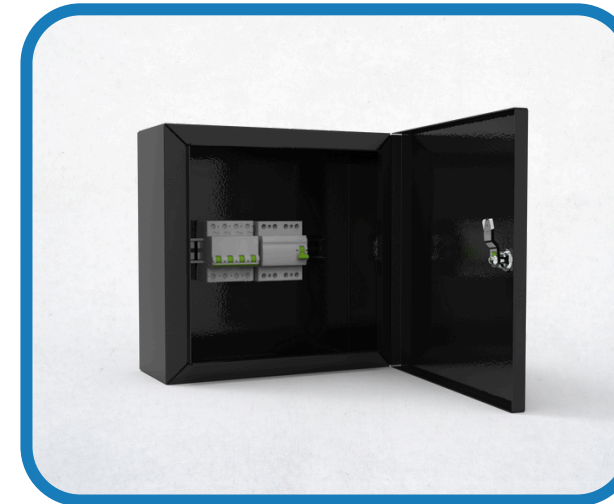


## RFID Customer Card

The Bladeco RFID Customer Card makes your EV charging fast and secure. With easy-to-use features, this card ensures seamless authentication at all Bladeco charging stations, keeping you ready to hit the road anytime.

Part Code

**RFID-CUST-001**

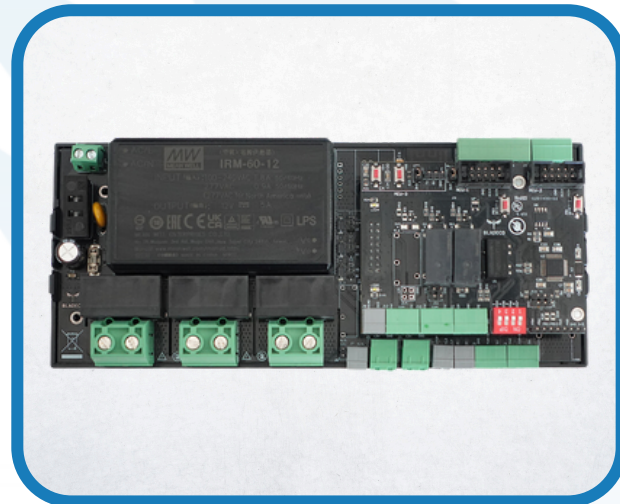


## Electrical Panel

The Electrical Panel by Bladeco is engineered for high-performance and durability. It serves as the central hub for managing and distributing electrical power efficiently, ensuring the safe and reliable operation of your charging infrastructure.

Part Code

**ELEC-PNL-004**



## Bladeco AC Motherboard

The Bladeco AC Charger Motherboard is the heart of your charging system, delivering reliable and efficient performance. Designed for durability, it ensures seamless operation of your Bladeco charging stations, keeping your EV charged and ready.

Part Code

**AC-MB-002**



## DC Charger Cable Carrying Handle

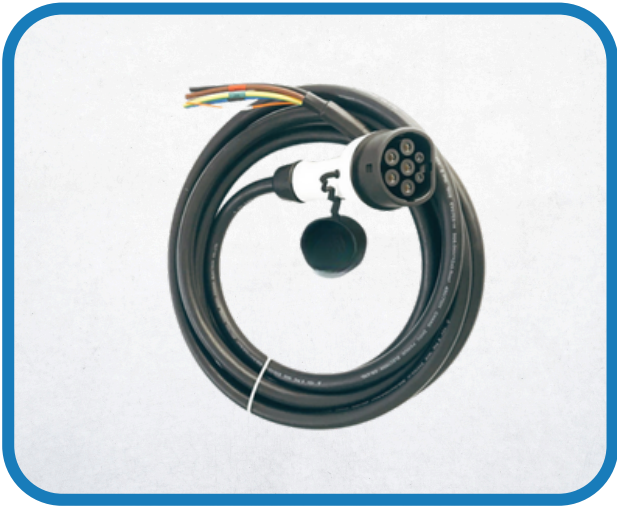
The DC Charger Cable Carrying Handle from Bladeco is an essential accessory designed for ease and convenience. Engineered for durability, this handle provides a secure and comfortable grip for managing and transporting DC charging cables.

Part Code

**DC-HND-005**



# Bladeco Accesories and Parts



## Type 2 Cable

The Bladeco Type 2 Cable ensures reliable and efficient electric vehicle charging with its high-quality design. Compliant with industry standards, it provides a secure connection and long-lasting performance for both commercial and residential use.

Part Code
T2-SKT-006



## CSS 2 Cable

The Bladeco CSS 2 Cable delivers robust and efficient electric vehicle charging with a high-quality build. Designed to meet industry standards, it offers a secure connection and durable performance for both commercial and residential applications.

Part Code
CSS2-SKT-007



## Type 2 Holder

The Bladeco Type 2 Holder offers a practical solution for organizing and securing Type 2 charging cables. Designed for durability and ease of use, it ensures your cables are neatly stored and readily accessible for both commercial and residential settings.

Part Code
T2-HLD-008

The Bladeco Accessories and Parts section features a comprehensive range of high-quality components designed to enhance and support your electric vehicle charging infrastructure. From RFID customer cards and AC motherboards to various types of charging cables, sockets, holders, and stands, our selection ensures reliable performance and compatibility with your Bladeco systems. Each product is engineered for durability and efficiency, providing the solutions you need for optimal operation and management of your charging stations. For more details and to view our complete range of products, please visit our online store at [shop.bladeco.com.tr](http://shop.bladeco.com.tr).

## CSS 2 Holder

The Bladeco CSS 2 Holder provides an efficient way to organize and secure CSS 2 charging cables. Built for durability and ease of use, it ensures your cables are neatly stored and easily accessible in both commercial and residential environments.

Part Code
CSS2-HLD-009



## AC Station Stand

The Bladeco AC Station Stand provides a stable and secure mounting solution for AC charging stations. Designed for durability and ease of installation, it ensures your charging station is safely positioned and easily accessible for both commercial and residential use.

Part Code
AC-STD-010





# Bladeco Automatic Remote Control Parking Bollard

The Bladeco Automatic Remote Control Parking Bollard is an advanced solution designed to secure your parking space effortlessly. Equipped with remote control functionality, this bollard allows for easy access management, providing both security and convenience. Whether for personal or commercial use, its robust design ensures durability, while the automatic operation adds a layer of efficiency to your parking management system. With Bladeco's commitment to innovation, this parking bollard offers a seamless blend of technology and practicality.

Featuring remote control access, it ensures easy operation while protecting your designated parking area. Built with durability in mind, this bollard is ideal for both residential and commercial use, providing a reliable solution to parking management.

## Energy-Efficient Operation

Low power consumption ensures cost-effective use.

## Smart Sensor Integration

Automatically detects vehicles, optimizing operation and reducing wear.

## Anti-Collision Design

Built with safety features to prevent accidental damage to vehicles.

## Weather-Resistant

Designed to function reliably in all weather conditions.

## Customizable Options

Available in various sizes and finishes to match different parking environments.

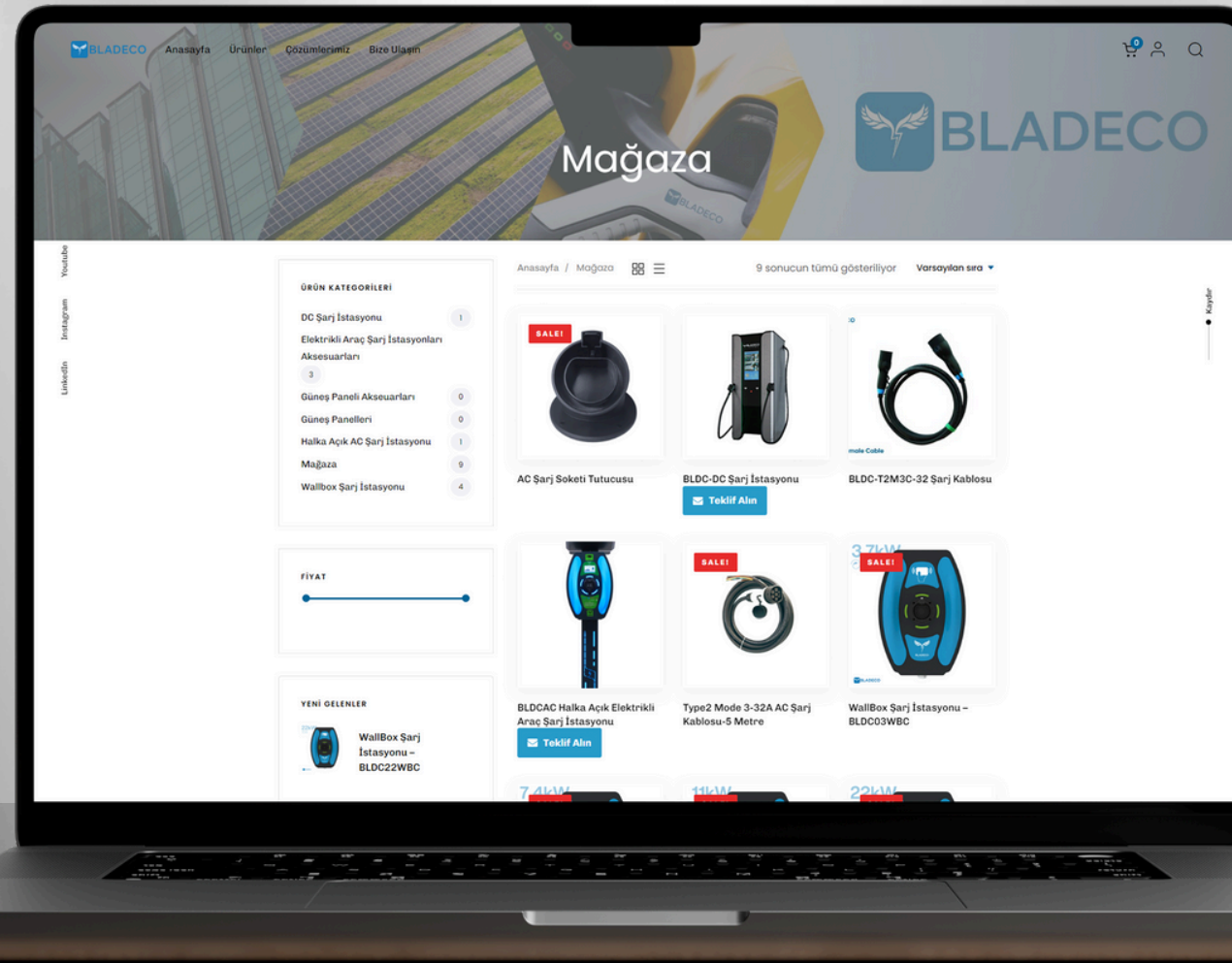




[www.shop.bladeco.com.tr](http://www.shop.bladeco.com.tr) 🔍

# Products in the catalogue and more.

Explore our full range of innovative charging solutions and accessories by visiting [www.shop.bladeco.com.tr](http://www.shop.bladeco.com.tr). Discover the products featured in this catalog and much more to enhance your electric vehicle experience. Stay ahead with Bladeco's cutting-edge technology and comprehensive support.



Discover the full spectrum of Bladeco's innovative electric vehicle charging solutions and accessories at [www.shop.bladeco.com.tr](http://www.shop.bladeco.com.tr). While this catalog showcases some of our most popular products, our online store offers an even broader selection tailored to meet diverse needs and preferences. From advanced charging stations to essential components, you'll find everything you need to power your electric journey. Visit our website to explore the complete range, compare options, and find the perfect products to enhance your charging experience.





**BLADECO**  
germany

Cami Mahallesi 401.Cadde No:11  
Gönen Isparta Turkey



+90 444 32 99

